

**“HAND ME
THE MOUNTZ!”**



Mountz FG Precision Preset Torque Screwdriver

THE MOST ADVANCED HAND DRIVER IN THE WORLD

- Unmatched quality you can count on
- Calibration life 4x ISO standards
- Two year unlimited warranty
- Lifetime warranty against manufacturer defects
- Accuracy and precision delivered for all fastening applications

A man with short brown hair and a beard is smiling at the camera. He is wearing clear safety glasses with a blue frame and large orange earmuffs. He is wearing a dark blue zip-up jacket. The background is a blurred workshop or factory setting with shelves and equipment. The entire image has a faint, repeating geometric pattern overlay.

THIS IS WHAT
CONFIDENCE
FEELS LIKE



The Right Source For Your Test & Measurement Needs

8715 Mesa Point Terrace San Diego, CA 92154
Toll Free: 1.866.363.6634 Tel: 1.619.429.4545 Fax: 1.619.374.7012
Email: sales@calright.com <http://www.calright.com>



50 years of innovation in the palm of your hand

THE STATE-OF-THE-ART PRECISION TORQUE DRIVER.

Engineered and assembled in Silicon Valley, the Mountz FG line of precision preset torque screwdrivers are the most advanced hand tools in the world.

Preset hand torque screwdrivers are ideal for fastening applications where operators repeatedly assemble parts at the same torque setting. These cam-over drivers include a highly sophisticated locking mechanism, a sleek and ergonomic design, and a low-impact reset mechanism to deliver the highest level of performance and comfort available.

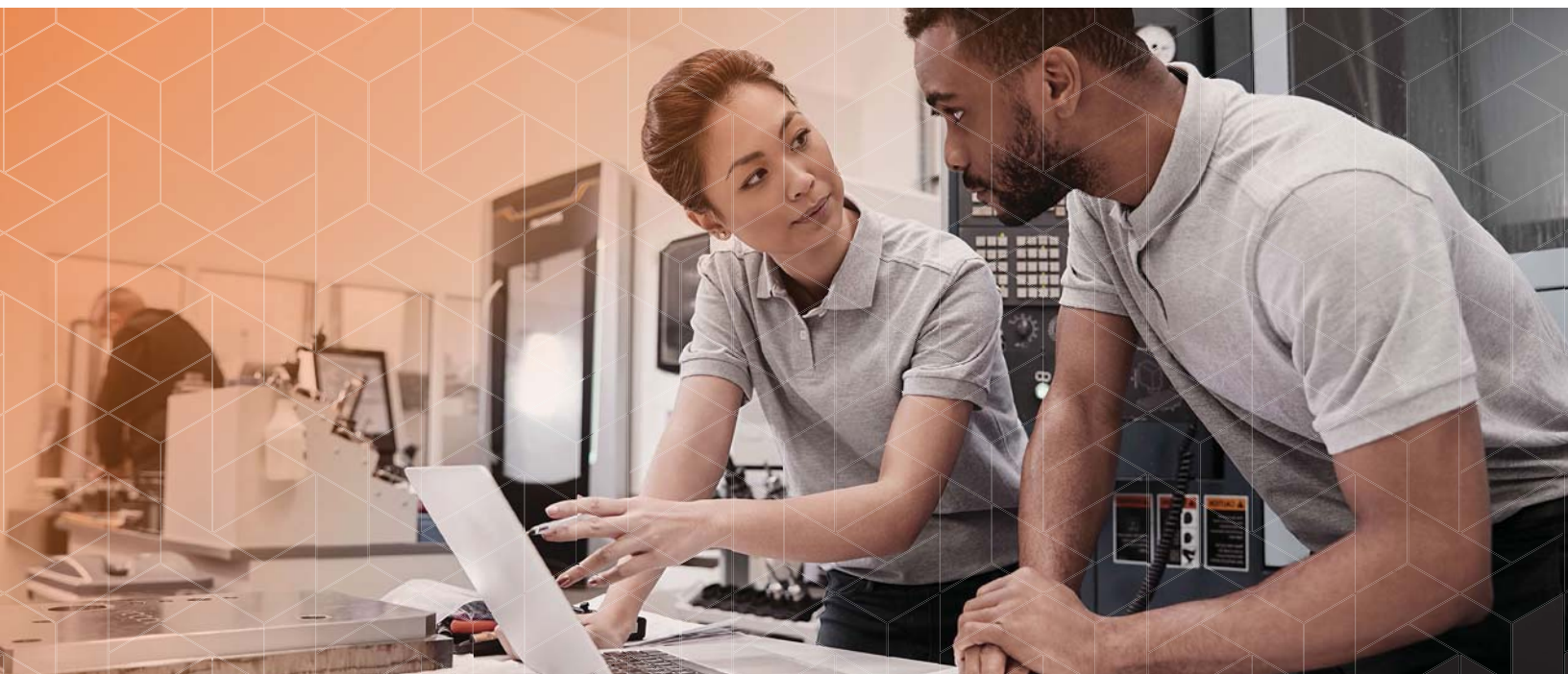
Precision and accuracy delivered every time

BREAKTHROUGH ACCURACY AND REPEATABILITY INCREASES OPERATOR CONFIDENCE AND OVERALL QUALITY OF ASSEMBLY.

Mountz FG tools stay in calibration 4X longer than the most stringent industry standard (ISO 6789). Engineered with a cam-over mechanism, the poka-yoke screwdriver prevents over torque. You can give Mountz FG tools to any operator and have the confidence that they will deliver the correct torque, time after time.

Our unique bearing system eliminates axial (end) and side loads by the operator, increasing consistency of torque delivered and joint reliability.





Torque tools that turn heads

INNOVATIVE AND ERGONOMIC, YES.
SLEEK AND BEAUTIFUL, ABSOLUTELY!

Innovative, ergonomic, sleek, stunning. In this revolutionary new precision torque tool line, Mountz has integrated industry-changing design improvements that boost accuracy, increase productivity, and dramatically expand longevity. These tools define performance. And, they are sleek and great feeling tools! So you better get used to hearing workers say, "Hand me the Mountz."



The last precision torque screwdriver you'll ever need to buy!

We've tested them over millions of cycles in our controlled lab environment and we still can't break them!

It's why we have an industry-leading warranty.

- Mountz FG tools are the only cam-over drivers on the market to offer a two year unlimited warranty. If it breaks in any way, we'll fix it or replace it for free.
- Lifetime guarantee against manufacturing defects.
- Warranty includes a free calibration within the first year.

PRODUCT OVERVIEW

| FEATURE | WHAT IS IT? | ADVANTAGE | END USER BENEFIT |
|--------------------------------------|---|---|---|
| Cycles Before Calibration | <ul style="list-style-type: none"> ISO 6789-1:2017 calls for maximum of 5,000 torque applications | <ul style="list-style-type: none"> Exceeds standards Mountz 4x ISO standards: 20,000 cycles before re-calibration | <ul style="list-style-type: none"> Longer time on the production line Reduces calibration budget and down time |
| Consistency | <ul style="list-style-type: none"> Lifecycle testing of well over 3 million combined torque applications | <ul style="list-style-type: none"> Confidence every tool meets requirements | <ul style="list-style-type: none"> Reduces need to replace tools/parts Lower required tool inventory |
| Cam & Clutch Design | <ul style="list-style-type: none"> Eliminate overtorque Anti-backlash, one way, CW and CCW all available | <ul style="list-style-type: none"> Eliminates fastener breakage issues Multiple cam options for numerous applications | <ul style="list-style-type: none"> Higher line productivity Error proofing assembly process |
| Handle Flutes | <ul style="list-style-type: none"> Sleek 4-flute handle design | <ul style="list-style-type: none"> Ergonomic | <ul style="list-style-type: none"> Sleek and comfortable Easy to clean |
| Needle Thrust Bearing | <ul style="list-style-type: none"> Rotary bearing to allow rotation between parts | <ul style="list-style-type: none"> Reduces axial load torque dependency Reduces friction influence on tool output Longer life on internal components | <ul style="list-style-type: none"> Higher accuracy Durability |
| Metal End Cap | <ul style="list-style-type: none"> Eliminates possibility of damage to end cap | <ul style="list-style-type: none"> Durable and doesn't strip out like plastic | <ul style="list-style-type: none"> Fewer parts need replacement Easier to service |
| Bit Retention (Universal Bit Holder) | <ul style="list-style-type: none"> ¾ inch female hex bit holder that grips any type of bit Patented One Touch bit release | <ul style="list-style-type: none"> Safe and secure No band / spring and captive ball to fall out | <ul style="list-style-type: none"> Better quality and productivity on line Bits don't fall out or into assembly operation |
| Locking Mechanism | <ul style="list-style-type: none"> Double locking mechanism to prevent accidental torque setting change | <ul style="list-style-type: none"> Avoids torque setting drift | <ul style="list-style-type: none"> Longer period before re-calibration Higher accuracy over time |
| Poka-yoke design | <ul style="list-style-type: none"> Cam-over action Colored label variations | <ul style="list-style-type: none"> Will not over-torque Supports assembly floor QA processes | <ul style="list-style-type: none"> Error-proofing and workers safety Better quality products at the end of the line |



MOUNTZ FG PRESET PRECISION HAND SCREWDRIVER LINEUP

| MODEL | ITEM NO. | TORQUE RANGES | | DRIVE SIZE | LABEL COLOR | WEIGHT | LENGTH |
|----------|----------|---------------|--------------|------------|-------------|----------|--------|
| | | AMERICAN | S.I. | | | | |
| FG-8i | 076546 | 0.8–8 lbf.in | 9–90 cN.m | 1/4" F/Hex | Blue | 7.3 oz. | 5.2" |
| FG-8i | 076551 | 0.8–8 lbf.in | 9–90 cN.m | 1/4" F/Hex | Red | 7.3 oz. | 5.2" |
| FG-8i | 076556 | 0.8–8 lbf.in | 9–90 cN.m | 1/4" F/Hex | Green | 7.3 oz. | 5.2" |
| FG-8i | 076561 | 0.8–8 lbf.in | 9–90 cN.m | 1/4" F/Hex | Gold | 7.3 oz. | 5.2" |
| FG-20i | 076547 | 2–20 lbf.in | 22–226 cN.m | 1/4" F/Hex | Blue | 7.3 oz. | 5.2" |
| FG-20i | 076552 | 2–20 lbf.in | 22–226 cN.m | 1/4" F/Hex | Red | 7.3 oz. | 5.2" |
| FG-20i | 076557 | 2–20 lbf.in | 22–226 cN.m | 1/4" F/Hex | Green | 7.3 oz. | 5.2" |
| FG-20i | 076562 | 2–20 lbf.in | 22–226 cN.m | 1/4" F/Hex | Gold | 7.3 oz. | 5.2" |
| FG-40i* | 076548 | 4–40 lbf.in | 0.4–4.5 N.m | 1/4" F/Hex | Blue | 11.5 oz. | 6.3" |
| FG-40i* | 076553 | 4–40 lbf.in | 0.4–4.5 N.m | 1/4" F/Hex | Red | 11.5 oz. | 6.3" |
| FG-40i* | 076558 | 4–40 lbf.in | 0.4–4.5 N.m | 1/4" F/Hex | Green | 11.5 oz. | 6.3" |
| FG-40i* | 076563 | 4–40 lbf.in | 0.4–4.5 N.m | 1/4" F/Hex | Gold | 11.5 oz. | 6.3" |
| FG-125i* | 076549 | 25–125 lbf.in | 2.8–14.1 N.m | 1/4" F/Hex | Blue | 11.5 oz. | 6.3" |
| FG-125i* | 076554 | 25–125 lbf.in | 2.8–14.1 N.m | 1/4" F/Hex | Red | 11.5 oz. | 6.3" |
| FG-125i* | 076559 | 25–125 lbf.in | 2.8–14.1 N.m | 1/4" F/Hex | Green | 11.5 oz. | 6.3" |
| FG-125i* | 076564 | 25–125 lbf.in | 2.8–14.1 N.m | 1/4" F/Hex | Gold | 11.5 oz. | 6.3" |

Designed and manufactured to meet or exceed the accuracy and repeatability requirements of ISO 6789: 2017 (+/- 6% of setting).

Color coding labels allows for torque setting identification in manufacturing area.

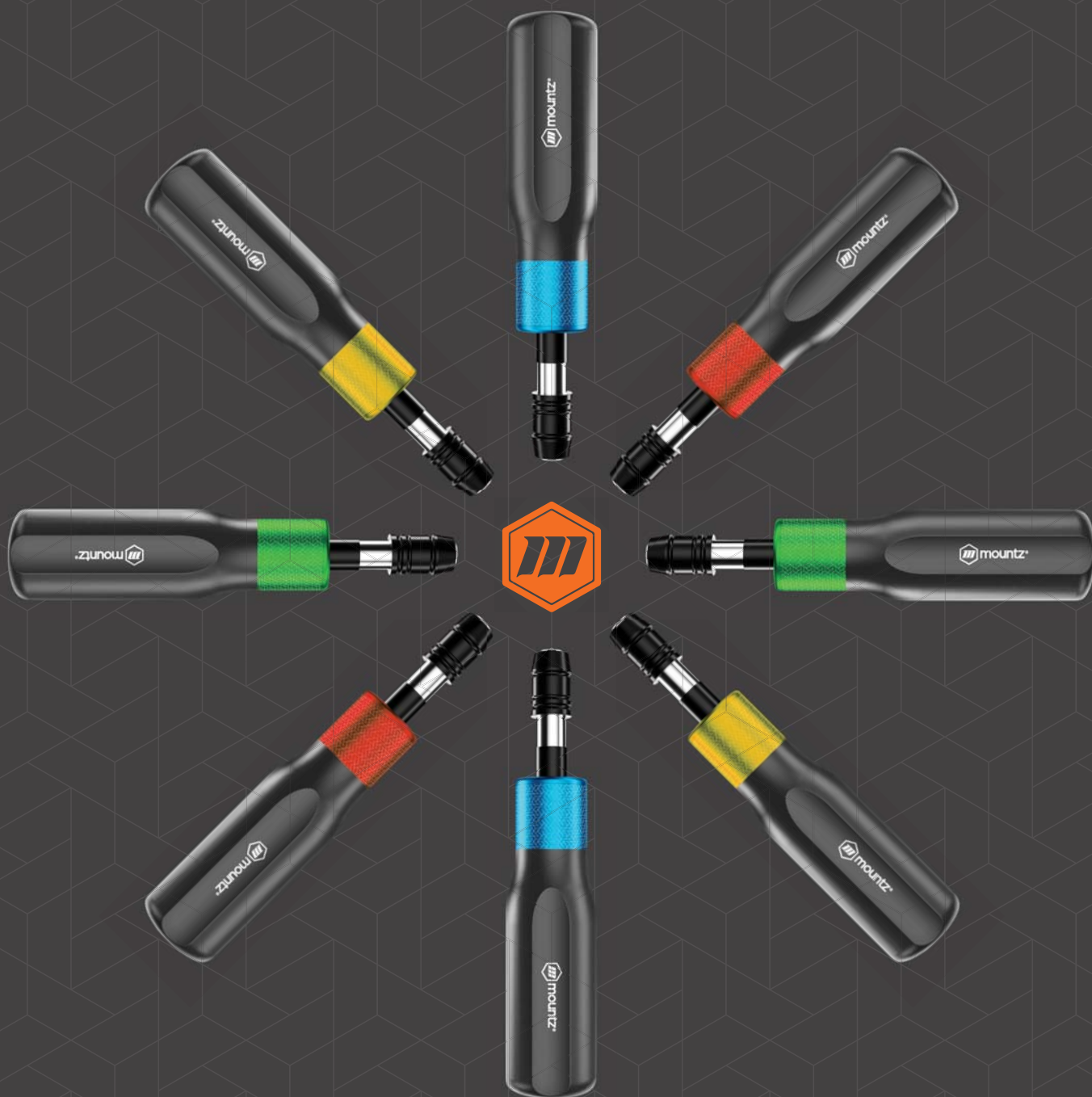


*A removable, sliding T-bar is supplied with FG-40i and FG-125i models.

Note: IFR (Impact Free Resetting) and OWC (One-Way Clutch with Locking Mechanism) screwdriver models are available.



Tamper-proof internal adjustment. No external adjustment scale—must be preset using a torque analyzer.



At Mountz, we take great pride in knowing that our advanced torque tools will end up in the right hands.



The Right Source For Your Test & Measurement Needs

8715 Mesa Point Terrace San Diego, CA 92154

Toll Free: 1.866.363.6634 Tel: 1.619.429.4545 Fax: 1.619.374.7012

Email: sales@calright.com <http://www.calright.com>