

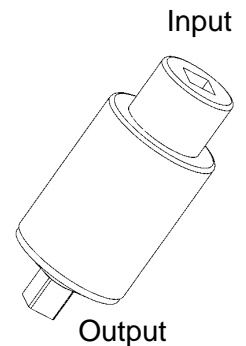
RDA (Run Down Adapters)

Rev 3.0 (5/4/11)

These durable run down adapters (RDA) are designed to provide consistent and reliable torque readings for use with power driven torque control tools. The RDA's reduce the impact and irregular peaks that cause poor repeatability. Each RDA has an effective torque range and will supply repeatable torque data within that range if used correctly.

Operation

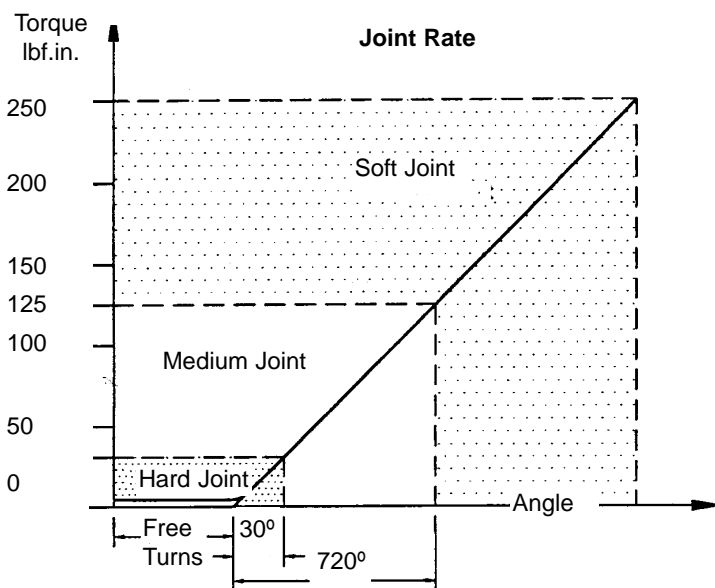
1. The run down adapter is mounted in-line between the tool drive and transducer.
2. The transducer should be properly secured on a solid surface or a test bench.
3. Reverse RDA to relieve any pressure on the internal load washers before each rundown.
Caution: DO NOT start RDA on power tool with threads disengaged or damage may occur.”
4. The RDA is designed to run in clockwise direction only.
5. Apply torque until RDA is run down completely. Then note or save reading with the analyzer.



Maintenance

1. Keep the treads of the RDA well lubricated. It is recommended that the RDA be disassembled, cleaned, and the threads re-coated with a molybdenum grease every 6-months. The washers, themselves do not require lubrication.

Illustrates an example of joint characteristic for RDA250i



Free Turns

This is when the input drive turns freely with little or no torque. All RDA models provide at least 5 full rotations with less than 5% of nominal torque.

Hard Joint

All Mountz RDA's will simulate a hard joint rate when used below 12% of its maximum torque capacity.

Soft Joint

A soft joint rate will be achieved when RDA's are used above 50% of its maximum torque capacity.

Note: Values may vary from each model. It's recommended for you to evaluate your model whenever joint rate characteristic is critical for your test method.

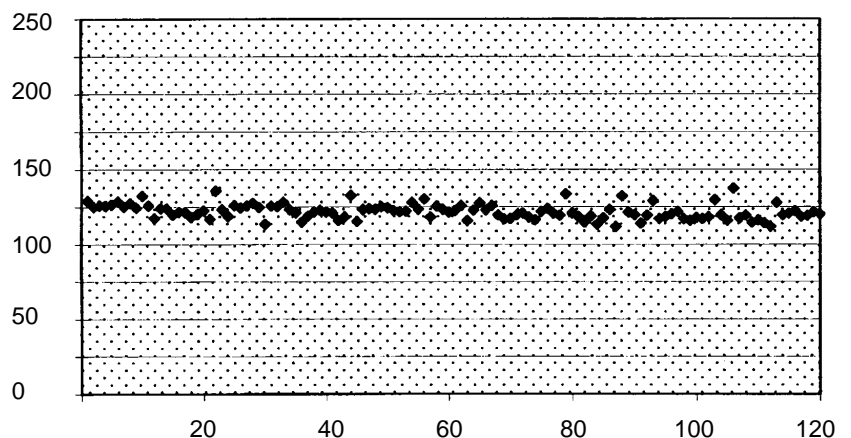
Torque Test Scatter Graph

The graph on the right shows torque values recorded after each test run.

Mean Torque: 121.72 lbf.in
Standard Deviation: 11.53 lbf.in

Mountz RDAs are designed to provide minimal scattering when used with a reliable and repeatable power tools, transducers and torque analyzers. The test equipment and method that are used will affect the performance of the run down adapters.

Torque Test Scatter



RDA (Run Down Adapters)

FAQ & Trouble Shooting

1. When do I use an RDA? When calibrating or testing a power and pulse tool.
2. Do I use a RDA when calibrating or testing a hand screwdriver or wrench? No.
3. Does the RDA unit need lubrication? Yes, it is recommended that the RDA be disassembled, cleaned, and the threads re-coated with a molybdenum grease every 6-months. The washers, themselves do not require lubrication.
4. I have an issue of non-repeatability and/or readings being too high or low when testing power or pulse tools using a filter setting on my analyzer? Try using other low-pass filter settings, as this can often be an issue with dynamic tools.
5. We are testing or calibrating a power tool near the maximum or minimum range of the torque analyzer & RDA, and it is causing an issue with non-repeatability and/or readings being too high or low with the tool? An analyzer is often sold with a single RDA that will handle the majority of situations for simulation of a joint. However a transducer with a full-scale capacity of 100 lbf.in may require an RDA other than an RDA-100i. This is often the case when the transducer is being used at the extremes of operation. When using a 100 lbf.in transducer and measuring torque near 10 lbf.in an RDA-10i or RDA25i may be a better choice.

Mountz Calibration & Repair Services

Mountz Inc. features an experienced calibration and repair staff. Our trained technicians can calibrate and repair most any tool. Mountz provides rapid service with quality that you can trust as we offer three state-of-the-art calibration lab and repair facilities that can calibrate up to 20,000 lbf.ft.

With over 45 years of experience, Mountz's in-depth knowledge of torque is reflected in our tool's craftsmanship and our ability to provide solutions to both common and uncommon torque applications. We perform calibrations in accordance with ANSI/NCSL-Z540. Mountz is dedicated solely to the manufacturing, marketing and servicing of high quality torque tools.

Mountz is an ISO 9001 certified and ISO 17025 accredited company.

Tool Service & Repair Capability

- Torque Wrench Calibration: Click Wrench, Dial Torque Wrench, Beam Wrench, Cam-Over & Break-Over Wrench
- Torque Screwdrivers: Dial, Micrometer, Preset & Adjustable
- Torque Analyzers/Sensors: All brands
- Electric Screwdrivers: All brands
- Air Tools: All brands
Impact Wrenches, Drills, Pulse Tools, Grinders, Percussive Tools, Air Screwdrivers, Nutrunners, DC Controlled Nutrunners
- Torque Multipliers: All brands

Mountz Service Locations

Eastern Service Center

19051 Underwood Rd.
Foley, AL 36535
Phone: (251) 943-4125
Fax: (251) 943-4979

Western Service Center

1080 N.11th Street
San Jose, CA 95112
Phone: (408) 292-2214
Fax: (408) 292-2733

Mexico Service Center

Mountz Mexico SA de CV Chihuahua
Av. Cristobal Colon #15343
Col. Paseos de Chihuahua
Chihuahua, Chih. Mexico CP 31125
Phone: (614) 481-0023
Fax: (614) 481-0053

www.mountztorque.com

sales@mountztorque.com

Download a "Service Form" and include a copy when you send the tools in to be serviced.

Looking for fasteners?



www.mrmetric.com