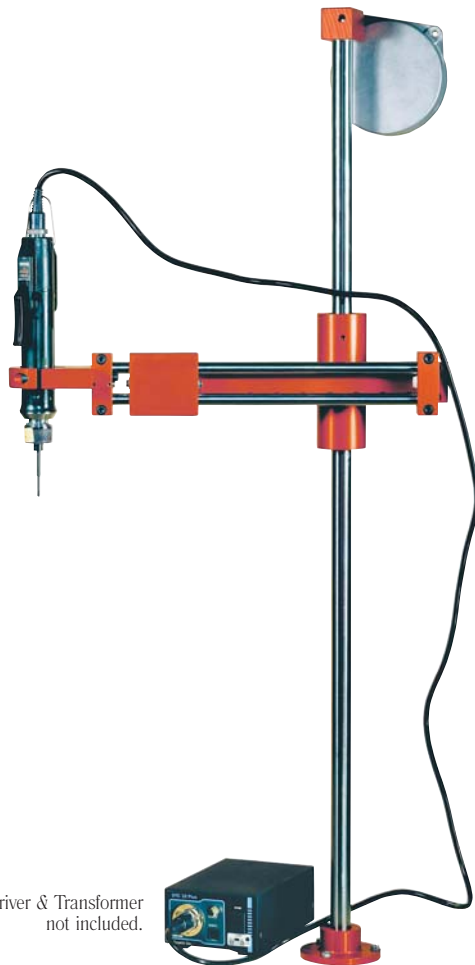


EZ-Glider

Linear Torque Arms



Driver & Transformer not included.

KEY FEATURES

- Prevents cross threading and side load. Keeps tool perpendicular.
- Reduces RMI (Repetitive Motion Injury) and CTS (Carpal Tunnel Syndrome) while boosting production.
- Extends in horizontal direction and arm length is adjustable.
- Maneuvers smoothly as the arm absorbs torque reactions from electric & pneumatic tools.
- Built with seasoned craftsmanship, every torque arm cylinder has four rows of ball bearings for smooth movement.
- A magnet on the backside of the tool clamp holds driver firmly against arm.
- Includes an in-line driver clamp.

LINEAR TORQUE ARMS

Model	Item #	Max Torque		Clamp Dia.	Height	Min Arm Reach	Max Arm Reach	Balancer Capacity
		American	S.I.					
EZ-12	260077	8.8 lbf.ft	12 N.m	1-1 1/2"	32 1/2"	16 1/2"	22"	1.1 - 2.6 lbs.
EZ-25	260078	18.4 lbf.ft	25 N.m	1-2"	36 1/2"	16 1/3"	22"	2.2 - 4.8 lbs.
EZ-40	260079	29.5 lbf.ft	40 N.m	1-2"	40 1/2"	21 7/8"	29 1/2"	3.1 - 4.8 lbs.
EZ-100	260080	73.7 lbf.ft	100 N.m	1-2"	40 1/2"	25 1/3"	33"	4.4 - 7.7 lbs.

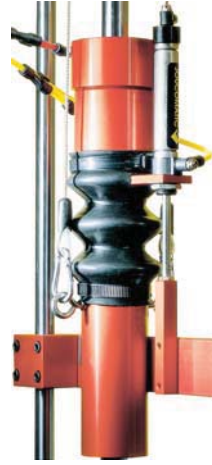
NOTE!

An additional balancer (Item #260152) can be added to the EZ-40 & EZ-100 model to increase balancer capacity. The additional balancer increases the dual balancer capacity to 5.3 - 8.8 for the EZ-40, and 6.6 - 13.2 for the EZ-100.

EZ-GLIDER
01.35



The Right Source For Your Test & Measurement Needs



ACCESSORIES

DOWNWARD ASSISTANCE KIT

These kits are ideal for self-tapping applications. The downward assistance system requires no effort from the operator to press downward on the driver as the operator simply presses the trigger of the driver and the cylinder glides the tool downward automatically.

There are two system options available:

Servo-Assisted (shown)

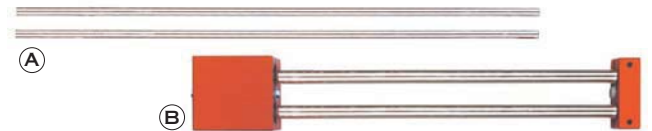
System features a built in collet chuck that allows the system to be used at any height.

Easy Push

System operates only at a preset height by using a mechanical stop that is set along the pole.

Both systems can be installed on a Linear or Articulated arm.

Model	Description	Item #	Pushing Force	Stroke
EZ-12	Servo-Assisted Electric Kit	260098	11 lbs.	-
EZ-25	Servo-Assisted Electric Kit	260099	17.6 lbs.	-
EZ-40/100	Servo-Assisted Electric Kit	260100	17.6 lbs.	-
EZ-12	Servo-Assisted Pneumatic Kit	260199	11 lbs.	-
EZ-25	Servo-Assisted Pneumatic Kit	260200	17.6 lbs.	-
EZ-40/100	Servo-Assisted Pneumatic Kit	260208	17.6 lbs.	-
EZ-12	Easy Push Electric Kit	260043	11 lbs.	4 7/8"
EZ-25	Easy Push Electric Kit	260041	19.8 lbs.	6 1/4"
EZ-40/100	Easy Push Electric Kit	260040	19.8 lbs.	7 7/8"
EZ-40/100	Easy Push Electric Kit	260039	33 lbs.	7 7/8"
EZ-100	Easy Push Electric Kit	260038	55 lbs.	7 7/8"
EZ-12	Easy Push Pneumatic Kit	260204	11 lbs.	4 7/8"
EZ-25	Easy Push Pneumatic Kit	260112	19.8 lbs.	6 1/4"
EZ-40/100	Easy Push Pneumatic Kit	260205	19.8 lbs.	7 7/8"
EZ-40/100	Easy Push Pneumatic Kit	260206	33 lbs.	7 7/8"
EZ-100	Easy Push Pneumatic Kit	260207	55 lbs.	7 7/8"



A EXTENSION SLIDES

Expands the maximum arm reach of the EZ-Glider Linear Arms.

Model	Extends Max. Arm Reach	Item #
EZ-12	27.5"	260088
EZ-25	27.5"	260089
EZ-40	36"	260090
EZ-100	41"	260091

B EXTENSION DOUBLE SLIDE

Expands the maximum arm reach of the EZ-Glider Linear Arms by adding a second slide to the arm.

Model	Extends Max. Arm Reach	Item #
EZ-12	31.5"	260092
EZ-25	30.5"	260093
EZ-40	41"	260094
EZ-100	46"	260095



ANTI-ROTATING CLAMP

Attach an "Anti-Rotating Clamp" to prevent the arm from rotating side-to-side to help the operator target the screw quickly and precisely.

for EZ-12 & 25 Linear Arms
Item #260019

for EZ-40 & 100 Linear Arms
Item #260022

ARP SYSTEM (not pictured)

A recoil spring positioned on the slide to permits the arm to come back to the rest position as soon as you release it.

Model	Item #
EZ-12	260096
EZ-25	260097
EZ-40	260097

INVERSE MOUNTING KITS (not pictured)

Mount either a Linear or Articulated arm from above.

Model	Item #
EZ-12, EZ-12R, EZ-25, or EZ-25R	260209
EZ-40, EZ-40R, EZ-100, or EZ-100R	260210

8715 Mesa Point Terrace San Diego, CA 92154

Toll Free: 1.866.363.6634 Tel: 1.619.429.4545 Fax: 1.619.374.7012

Email: sales@calright.com <http://www.calright.com>