



HIOKI

2003

9625

POWER MEASUREMENT SUPPORT SOFTWARE

Power Measuring Instruments



Graphically process measurement data from Model 3169-20/21 easily on a PC!

The Model 9625 POWER MEASUREMENT SUPPORT SOFTWARE application provides easy graphical processing on a computer of measurement data saved on the Models 3169-20/21 and 3166 CLAMP ON POWER HiTESTERS.

3169-20/21

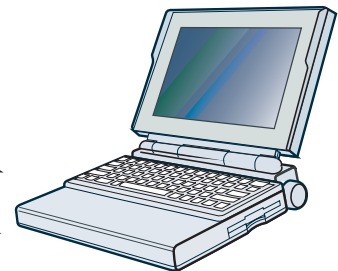


3166



Power Data & Harmonic Data

Power Data & Harmonic Data



The 9625 handles both power and harmonic measurement data simultaneously.

Features

■ Time Series Graph Display Function

Measurement data can be displayed as a time series graph. Demand data measured in different series can be overlaid on the display.

■ Summary Display Function

Measurement data can be displayed directly in table form.

■ Daily, Weekly and Monthly Report Display Function

Daily, weekly and monthly reports of demand data can be displayed.

■ Harmonic Analysis Function

Display harmonic measurement data as a graph, list or waveform. (Also compatible with the harmonic measurement data captured by Model 3166.)

■ Print Function

Each screen can be printed.



ISO14001
JQA-E-90091

CALRIGHT INSTRUMENTS

The Right Source For Your Test & Measurement Needs

2232 Verus Street Suite D San Diego CA 92154 USA
Toll Free: 866.363.6634 Tel: 619.429.4545 Fax: 619.374.7012
Email: sales@calright.com <http://www.calright.com>

Easily display and print various screens such as graphs and spreadsheet tables

Step 1. Load measurement data

Load up to 16 data sets from the 3169-20/21 or 3166 at once. Measured numerical values and waveform data are recognized and displayed automatically.

1. Loading and deleting data, and changing data names, can be done easily.
2. Multiple sets of measurement data can be loaded and managed in a single file.



Step 2. Select the display (screen) type

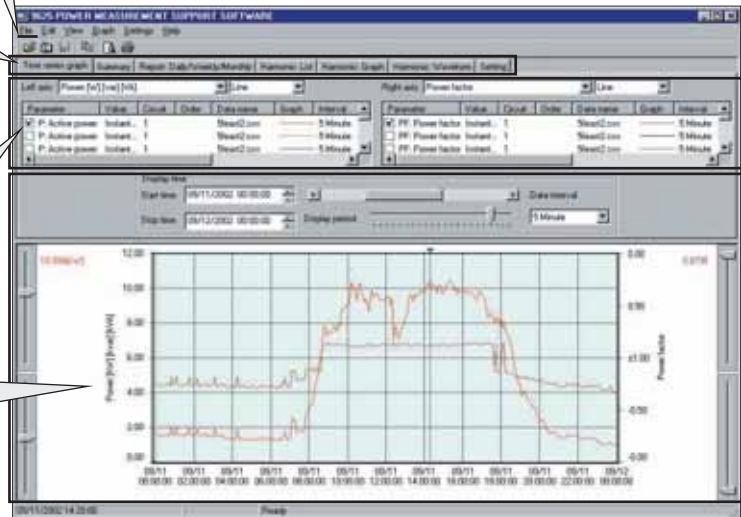
Select from time series graph, summary, daily, weekly or monthly report, harmonic list, harmonic graph, harmonic waveform or settings.

Step 3. Select display items (two-axis display is possible)

1. Select the data items (up to 16) to display.
For graph displays, the type of graph (line or bar) can be selected.
2. Enter details for data display. (data item names, levels, etc.)

Step 4. Set the start/stop times and data interval to be displayed

1. Set the data period to display. (start/stop time and data interval)
 - The displayed period can be easily changed by scrolling.

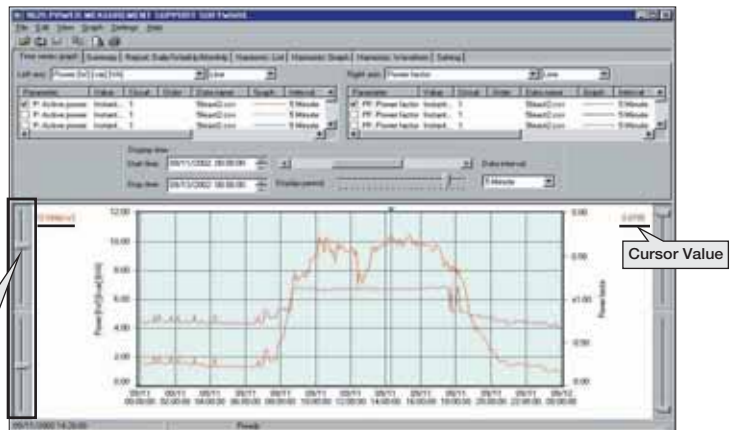


■ Time Series Graph Display Function (two-axes display possible)

■ The displayed graph can be set to suit particular start/stop times and data intervals. Harmonic time series graphs can be displayed.

Convenient Functions

- (1) The horizontal (time) axis can be easily scrolled to show the desired range.
- (2) Upper and lower limits (measurement values) of the vertical axis can be easily set and changed.
* Graph type (line, bar or stacked bar), line type (such as solid or dashed), color and details of upper and lower numerical values can be set.
- (3) Any desired numerical data value on a graph can be confirmed and displayed by cursor movement.
- (4) The display can be switched between 2D and 3D graphs.



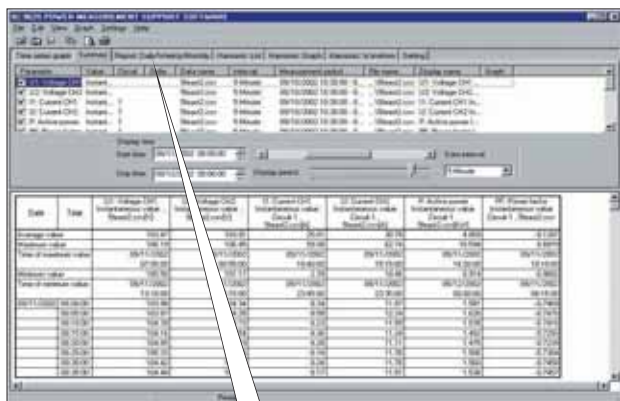
■ Summary Display Function

Summary

■ Displays a summary of the data values between specified start/stop times, at the specified data interval.

Convenient Functions

- (1) In addition to measurement values within the period being displayed, the summary shows period, maximum, minimum and average values.
- (2) Measurement data names and measurement units can be edited in the summary.

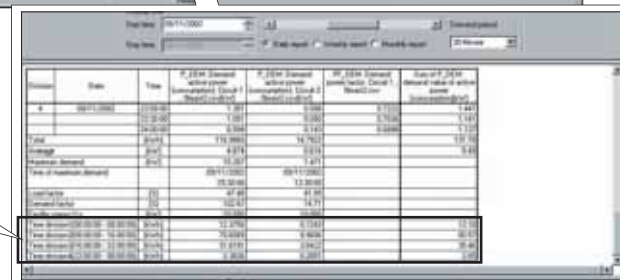


Daily, Weekly or Monthly Report Display

■ Displays a summary covering the total values in daily, weekly or monthly reports.

Convenient Functions

- (1) The time axis for each total scrolls to easily change the totalized period.
- (2) The total time range of measurement data can be totalized in up to four sections per time period.



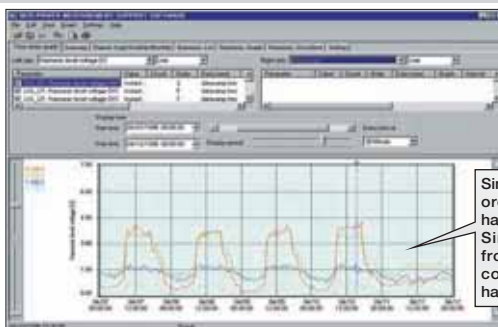
Harmonic Display Function Harmonic data measured by the 3169-20/21 and 3166 can be displayed in various ways

Harmonic Time Series Display

While displaying a time series graph, select the harmonic item for the vertical axis to display a time series graph of harmonics.

Convenient Functions

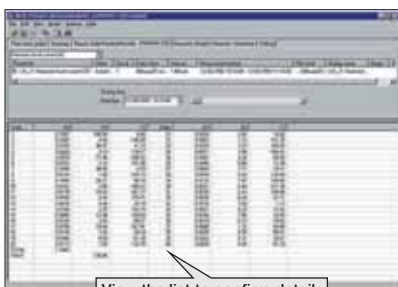
- (1) Up to 32 graphs can be displayed simultaneously using 2-axes display.
For one circuit measurement, up to 32 orders can be graphed. Using multiple instruments, time series of harmonics can be easily compared.
- (2) Any desired chronological detail can be easily confirmed using the cursors on the graph.



Simultaneously display multiple orders to confirm changes in harmonics!
Simultaneously display data from multiple instruments to confirm concurrent series of harmonics!

Harmonic List Display

Displays harmonic data for the selected display item as a list.



View the list to confirm details

Harmonic Graph Display

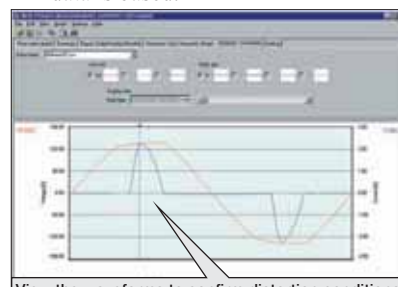
Displays harmonic data for the selected display item as a bar graph.



View the power graph to confirm trends in harmonics

Harmonic Waveform Display

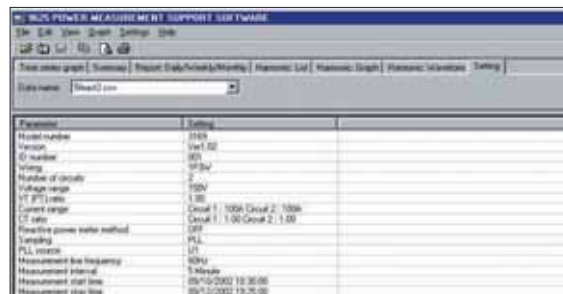
Displays the voltage and current waveforms upon which harmonic data is based.



View the waveforms to confirm distortion conditions

Settings Display Function

When you select a data name to be load, the measuring instrument model and setting conditions at measurement time are displayed. Measurement data and measurement conditions can be managed at the same time.



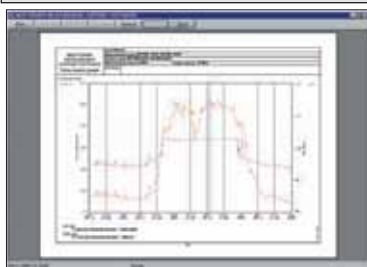
Print Function

Reports and screen copies of the displayed screen can be easily printed.

Convenient Functions

- (1) Printing results can be confirmed by print preview.
- (2) When creating a report, screen data can be copied and pasted into a commercial word processor program.

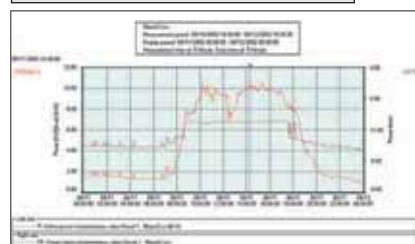
Preview printing to confirm print results before printing



Produce daily, weekly or monthly reports by one-touch report printing



Graph copying is also a one-touch operation



9625 Specifications

General Specifications

Supported instrument models : 3169-20, 3169-21 and 3166(CLAMP ON POWER HiTESTERs)

Operating environment : Computer: PC-AT compatible (DOS/V machine)
CPU: Pentium 200 MHz or higher
Memory: 128 MB or more (recommended)
Hard disk: 128 MB or more free space
Display: XGA (1024×768) or higher
Disc device: CD-ROM drive (for installation)
Operating system: Windows95/98, NT4.0, 2000, Me, XP (English edition)
Internet Explorer 4.0 or later

Supplied Media : One CD-R disc

9625 Specifications

Functional Specifications

[Data Load/Save Functions]

	Loading data	File extension	Data format	Data contents
3169 -20/21	Data file	CSV	CSV	Instantaneous value, average value, maximum value, minimum value, integrated value, demand value, harmonic
	Waveform data file	WUI	Binary	Instantaneous waveform
	Short-interval data file	BIN	Binary	Instantaneous values
3166	Integrated measurement data file	ITG	CSV	Instantaneous value, integrated value
	Demand measurement data file	DEM	CSV	Instantaneous value, maximum value, minimum value, demand value
	Harmonic measurement data file	HRM	CSV	Instantaneous value, average value, maximum value
	Waveform data file	WUI	Binary	Instantaneous waveform
	Setting file	SET	-	
9625	Combined file	DAT	Binary	

	Save data	File extension	Data format	
9625	Combined file	DAT	Binary	

Maximum data capacity : Up to 528 MB per data set (total composite data up to 1.5 GB)

[Time Series Graph Display Function]

Graph display item : Voltage, current, active power, reactive power, apparent power, power factor, frequency, Integrated value(active power, reactive power), demand, harmonic (level, content ratio, phase angle, total value, THD)

Y-axis upper/lower limit setting : The display position (upper and lower display limits) of the vertical (Y) axis of a graph can be set by scroll bar or by specifying values.

Interval setting : Select each cycle, or 0.1, 0.2, 0.5, 1, 2, 5, 10, 15 or 30 sec.; 1, 2, 5, 10, 15 or 30 min.; or 1, 2, 3, 4, 6, 8 or 12 h; or 1 day

Display period range setting : An optional analysis period can be specified from the overall measurement data period

(1) Analysis start date and time (YMD, HMS) is specified numerically
(2) Analysis stop date and time (YMD, HMS) is specified numerically
Display of measurement data period (measurement start and stop date and time)

Reference value setting : Display set standard value

Graph type selection : Line, bar, 2-axes and 3-dimensional

Graph line type & color setting : Line type and display color can be set for each data set, and marker display is possible

Stacked bar graph display : Up to 16 types of data series (demand value, demand quantity) can be displayed in an overlay graph

Cursor measurement : Measurement values can be displayed by the cursor

Data display units setting : Engineering units (m, k, M, G, etc.) can be selected

[Summary Display Function]

Display item selection : Select the items to display in the summary

Daily, weekly and monthly report display : Displays a report for the specified daily weekly or monthly period

Load factor calculation display : Calculates the load factor and demand factor as a daily, weekly or monthly report, and displays the results

Independent time range totalizing : Specify up to four time ranges and totalize data for each time range independently

[Harmonic Display Function]

Waveform display : Displays waveform data for a specified time

List display : Displays a list of harmonic data for a specified time

Graph display : Display a bar graph of harmonic data for a specified time

Cursor measurement : Displays the value at the cursor with waveform and graph displays

[Setting Display Function]

Setting display : Displays a list of the setting conditions

Loads setting conditions from a data file (3169-20/21)

Loads setting conditions from a settings file (3166)

[Copy Function]

Copies to the clipboard : Each display can be copied to the clipboard

[Print Function]

Printing a displayed time series graph : Previews and prints the contents displayed on a time series graph

Printing a displayed summary : Previews and prints the contents displayed in a summary

Printing a harmonic display : Previews and prints the contents displayed in a harmonic spreadsheet

Printing the settings display : Previews and prints the contents displayed in the settings display

Comment entry : Text comments can be entered in any printout

Printing support : Any color or monochrome printing supported by the operating system

[Display Language]

Language : English

DISTRIBUTED BY



The Right Source For Your Test & Measurement Needs

2232 Verus Street Suite D San Diego CA 92154 USA
Toll Free: 866.363.6634 Tel: 619.429.4545 Fax: 619.374.7012
Email: sales@calright.com http://www.calright.com