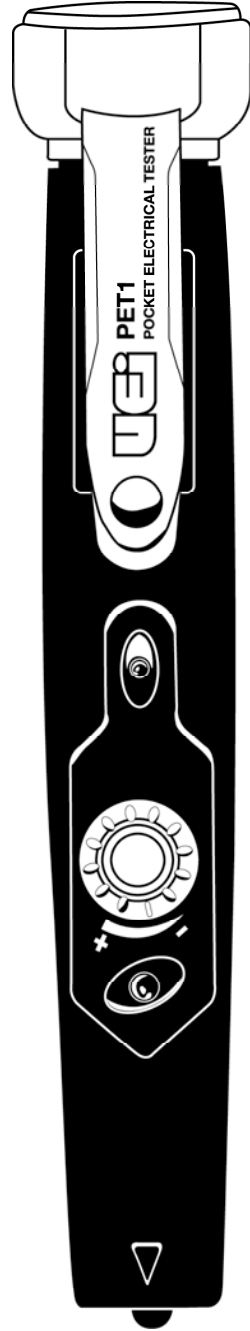




INSTRUCTION MANUAL

PET1



Pocket Electrical Tester

Featuring The New
WORKLIGHT

1-800-547-5740 • Fax: (503) 643-6322
www.ueitest.com • email: info@ueitest.com

Introduction

The PET1 is a convenient pocket-size multifunction tester, which combines the latest digital technology with an advanced sensor to detect high/low AC voltage.

Features include

- Non-contact AC voltage test: from 12-600 V AC (with adjustable sensitivity)
- Detects high and low AC Voltage
- Continuity check: 0 - 80 M Ω
- Work light

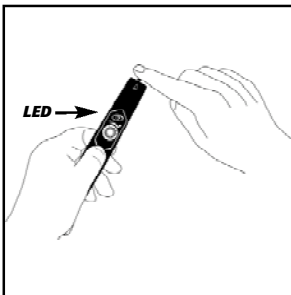
Safety Notes

- The tester should not be used to test voltages above the stated rated voltage.
- Operating temperature within -10° to +50°C (14° to 122°F) and a frequency range from 50 to 500 Hz. Best results at a temperature range up to 86°F, humidity 80% at altitude up to 6,000 feet.
- The tester must be tested on a known voltage source to make sure it is operating properly.
- Do not use in the presence of moisture, (e.g. dew or rain)
- Do not use if damaged
- Static electricity may be generated by rubbing the "BODY" of the tester (when pressing the switch) thus causing the audible and visual alert to function
- The flashlight lights up when the switch is pressed
- In case of doubt, please consult a qualified technician

Self-Test Function

Prior to use, perform a self-test to ensure full functionality. Press the switch down and touch the "**TIP**" with your free hand.

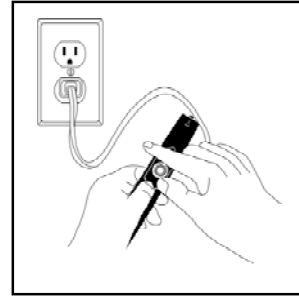
The LED lights red and buzzer sounds indicating "**NORMAL FUNCTION**".



Non-Contact AC Voltage Testing

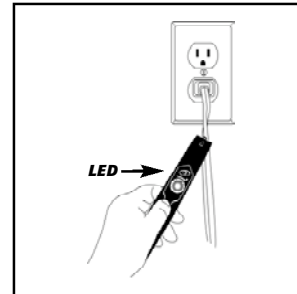
Press the switch to test.

To locate "**LIVE/HOT**" side of a wire, lower sensitivity until the detector only sounds on one wire.



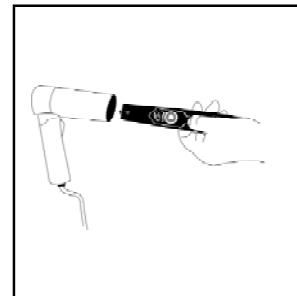
Broken wire/fault finding

"**FAULT/BREAK**" point of a wire is indicated by an interruption in sound and light (red LED).



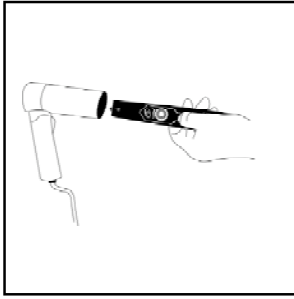
Proper connection check

Move the tester close to an un-energized appliance. The buzzer comes ON when power is applied.



Ground/Earthing check

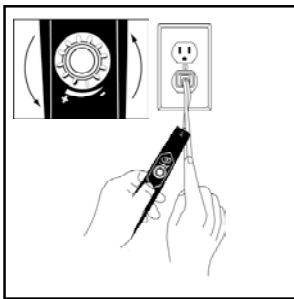
Move the tester close to a plugged-in (not turned on appliance). The buzzer comes ON if the "GROUND/EARTHING" is not connected at the outlet.



NOTE:

1. To Reduce Sensitivity

If sensitivity is too high, rotate adjustment left (counter-clockwise)



2. Static electricity may be generated by rubbing the plastic housing thus causing an indication (LED blinks).
3. The sensitivity may be reduced under high humidity environments.
4. Test only insulated (unshielded) wires that are connected to AC voltage.
5. Wires inside concrete walls or metal conduit cannot be detected.

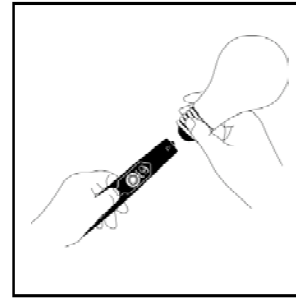
Continuity Check



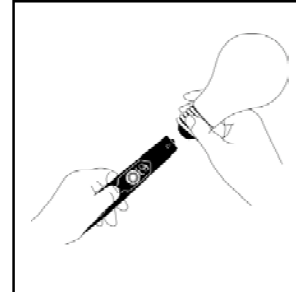
WARNING!

Be sure to disconnect any AC mains or high voltage!

Press test switch then contact one side of an object to the "TEST PIN" and the other side of the object with your free hand. The PET1 will easily identify "GOOD" or "BAD" fuses, bulbs, heating elements, wiring etc.

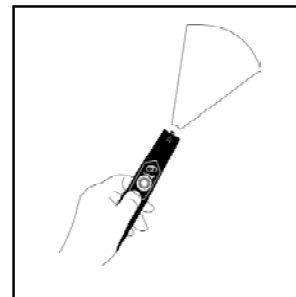


GOOD
LED blinks and
buzzer sounds



FAULT
No response

Flashlight



LED (1) lights up
when switch is
pressed

Battery Replacement

Twist the clip either left or right and remove the cover. Replace with fresh batteries as shown (Fig. 1).



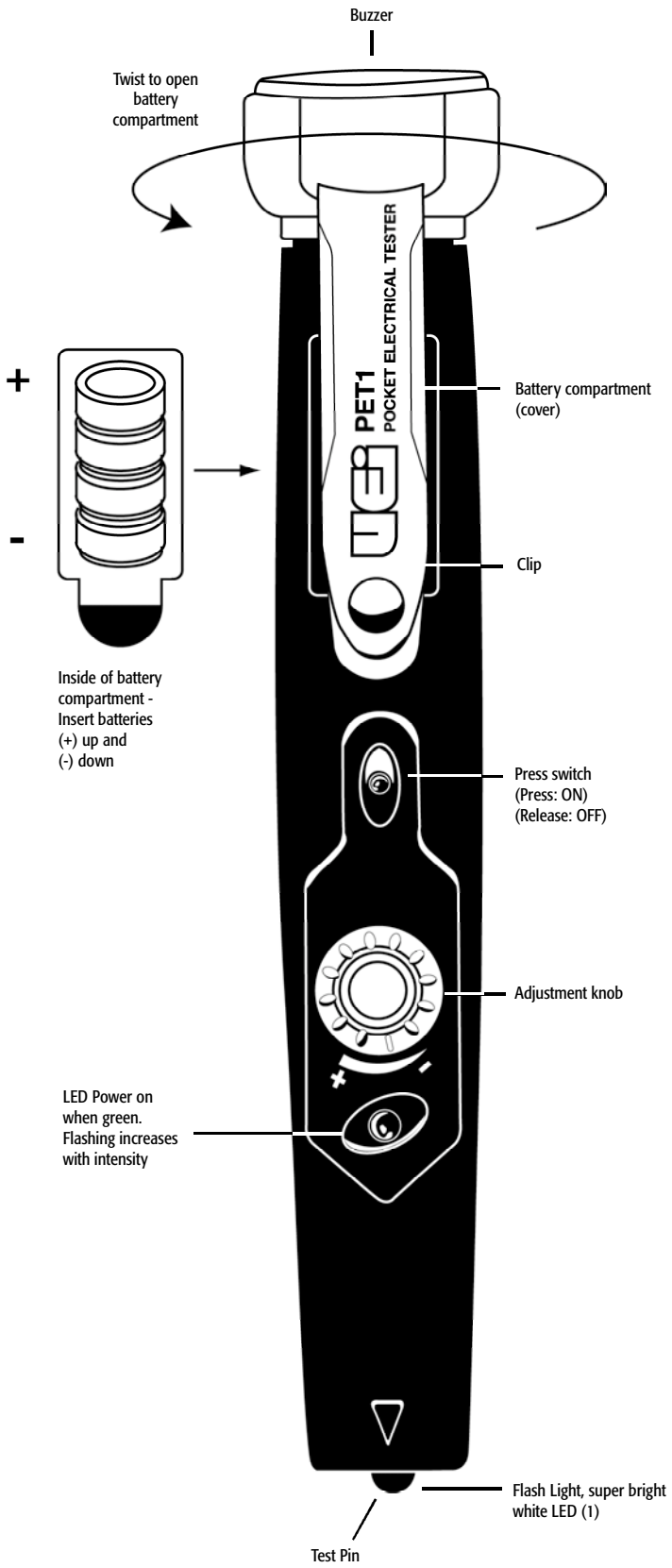
WARNING!

Be sure to disconnect any AC mains or high voltage!

Standard Accessories

Standard

1.5V button battery (size: 11.6 x 5.4mm) AB13



(Fig 1)



PET1

Pocket Electrical Tester

Limited Warranty

The PET1 is warranted to be free from defects in materials and workmanship for a period of three years from the date of purchase. If within the warranty period your instrument should become inoperative from such defects, the unit will be repaired or replaced at Uei's option. This warranty covers normal use and does not cover damage which occurs in shipment or failure which results from alteration, tampering, accident, misuse, abuse, neglect or improper maintenance. Batteries and consequential damage resulting from failed batteries are not covered by warranty.

Any implied warranties, including but not limited to implied warranties of merchantability and fitness for a particular purpose, are limited to the express warranty. Uei shall not be liable for loss of use of the instrument or other incidental or consequential damages, expenses, or economic loss, or for any claim or claims for such damage, expenses or economic loss. A purchase receipt or other proof of original purchase date will be required before warranty repairs will be rendered. Instruments out of warranty will be repaired (when repairable) for a service charge. Return the unit postage paid and insured to:

1-800-547-5740 • FAX: (503) 643-6322
www.ueitest.com • Email: info@ueitest.com

This warranty gives you specific legal rights. You may also have other rights which vary from state to state.

