

T-Series InfraRed Camera (640 x 480 IR Resolution)

With on board Visual Camera, Fusion, Touch Screen LCD & Interchangeable Lens

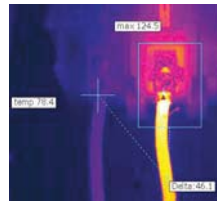
- 0.05°C @ 30°C Thermal Sensitivity
- Bright Video Lamp
- Annotate Images with Voice, Text and Sketch
- Thermal Fusion & Picture-in-Picture
- 4.3" Touch-Screen LCD Display
- Convenient 120° rotating lens
- 4X Continuous Zoom
- Delta T - Differential Temperature
- Instant Report



Multifunction Touch Screen



Thermal Fusion



Differential Temperature



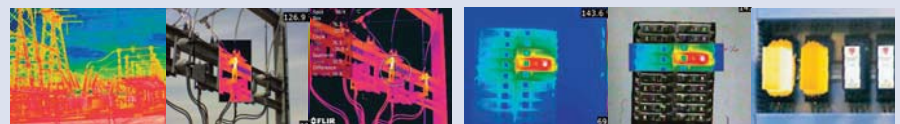
FLIR T620 Features

- **High Resolution IR Images** — 307,200 pixels (640 x 480) Infrared resolution
- **Visible Light Digital Camera** — 5MP resolution with LED lamp provides sharp images regardless of lighting conditions
- **4X Continuous Zoom** — Zoom with auto/manual focus
- **Rotating Lens** — Rotating lens detents up to 120° for easy viewing angle
- **Scalable Thermal Fusion** — Blending of thermal and digital images
- **Scalable Picture in Picture (PIP)** — Displays thermal image super-imposed over a digital image
- **Video Lamp** — Allows the visual camera and fusion to be used in poorly lit environments
- **High Temperature Range** — measuring up to 1202°F (650°C) targeting electrical and industrial applications
- **± 2% Accuracy** — reliable temperature measurement
- **Thumbnail Image Gallery** — Allows quick search of stored images
- **Li-Ion Rechargeable Battery** — lasts >4hrs continuous use; replaceable
- **Laser LocatIR™ Pointer** — Pinpoints a reference spot with a laser and aligns a marker to it on the image
- **IR Window Correction** — Menu settings allow you to account for transmission loss through IR windows
- **Voice Comment Recording** — on images & can be integrated onto report
- **Wireless Communication** — Bluetooth® Transmitter with METERLiNK™
- **Instant Report** — Create a Thermographic Inspection report directly in the camera
- **Digital Video** — Records video to the memory card
- **Video Streaming** — MPEG4 streaming video over Wi-Fi
- **Wi-Fi Connectivity** — Sends images and data to mobile devices (ie iPhone® or iPad®) to share reports and critical information quickly
- **Programmable Button** — Program shortcuts to your favorite functions so that you're always just one click away
- **Includes** — SD Memory Card (stores >1000 Radiometric JPEG images), AC adaptor/charger, two Li-Ion rechargeable batteries, 2-bay battery charger, USB and HDMI cables, FLIR Tools software CD-ROM, Bluetooth® headset, hand strap, neck strap, camera lens cap, tripod adapter, and hard transport case
- **Interchangeable Optics** — Optional 15° Telephoto, 45° Wide Angle



Warranty extended to 2 years when the camera is registered

Applications



Utility Market — Utilities worldwide use infrared cameras to locate problems or to detect hot spots and other problems before they turn into costly failures and production downtime or dangerous electrical fires.

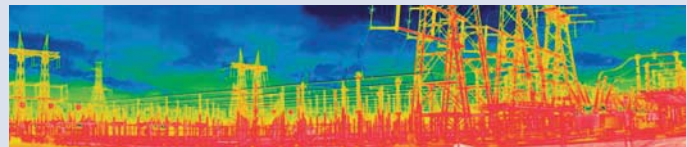
Electrical Inspections — With FLIR thermal imaging cameras electrical contractors can scan electrical cabinets/panels and components for a non-contact view of conditions.

Software Packages

QuickReport™ PC software enables users to Organize, Analyze and Create Reports with FLIR Cameras.

FLIR BuildIR Software package specifically designed to carry out advanced analysis of building structures. It is used to analyze images taken with an infrared camera, and create inspection reports based on these images.

FLIR Reporter Ver. 8.5 is a powerful software for creating compelling and professional, fully customized, easy-to-interpret reports in a standard MS Word Document. You can create a report by simply Dragging and Dropping your images on a desktop icon or using the Wizards to guide you step-by-step through the process. The saved document is a 'live' report with full access to the analysis tools and temperature measurement data. The reports can be multi-page and include all of your IR inspection data -infrared and visual images, temperature measurements, voice comments and text notes.



Panorama Function

This unique function allows you to conveniently piece together normal sized images to create one large image for a wide angle view of the area being measured by using FLIR BuildIR or Reporter Software package



METERLiNK frees the Thermographer from the manual process of collecting field data



Infrared cameras quickly locate problems with electrical equipment



Collecting current measurements and associating them with the right component identified on an infrared image, can be a complicated and cumbersome process



Manual data collection results in unnecessary complexity and risk. METERLiNK eliminates this problem by allowing the thermographer to quickly take a current reading on an electrical target and associate those readings with the corresponding targets stored in an infrared image

FLIR T620 Specifications

Features

| | |
|-------------------|---|
| Temperature range | -4°F to 1202°F (-20°C to 650°C) |
| Image Storage | 1000 radiometric JPEG images (SD card memory) |

Imaging Performance / Image Presentation

| | |
|---|---|
| Frame Rate | 30Hz |
| Field of view/min focus distance | 25° x 19°/9.8" (0.25m) |
| Focus | Manual/Automatic |
| Thermal sensitivity (N.E.T.D) | <0.05°C at 30°C |
| Detector Type - Focal plane array (FPA) uncooled microbolometer | 640 x 480 pixels |
| Spectral range | 7.8 to 14µm |
| Display | Built-in touch-screen 4.3" color LCD |
| Image modes | Thermal/Visual/Picture in Picture/Fusion |
| Image annotation | Voice (60 sec); text comments, Sketch |
| Lens | 25° (optional 15° Telephoto, 45° Wide Angle lenses available) |
| Video Lamp | Bright LED lamp |
| Laser Classification/Type | Class 2/Semiconductor AlGaInP Diode Laser: 1mW/635nm (red) |
| Set-up controls | Mode selector, color palettes, configure info to be shown in image, local adaptation of units, language, date and time formats, and image gallery |
| Measurement modes | 10 Spotmeters, 5 Box areas, Isotherm, Auto hot/cold spot, Delta T |
| Measurement correction | Reflected ambient temperature & emissivity correction |
| Battery Type/operating time | Li-Ion/ >3 hours, Display shows battery status |
| Charging system | In camera AC adapter/2 bay charging system |
| Shock | 25G, IEC 68-2-29 |
| Vibration | 2G, IEC 68-2-6 |
| Dimensions/Weight | 5.6x7.7x3.7" (143x195x95mm)/2.87lbs (1.3kg), including battery |
| Warranty | 2 years (Warranty extended to 2 years when the camera is registered) |

Ordering Information

Part Number

55901-0102FLIR T620 Thermal Imaging InfraRed Camera (640x480) with WiFi

ACCESSORIES

| | |
|----------------------|---|
| T198055 | Rechargeable Battery |
| T198126 | Battery Charger including Power Supply |
| T910814 | AC Adapter Charger (110-240V, include multiple plugs) |
| 1910490 | Cigarette Lighter Adapter Kit, 12VDC (1.2m/3.9ft cable) |
| T197914 | 15° Telephoto Lens |
| T197915 | 45° Wide Angle Lens |
| T197778 | BuildIR Software package |
| T197717 | FLIR Reporter 8.5 Software, Professional |

CERTIFICATION TRAINING

3300149ITC Level I Certification Training per attendee



The Right Source For Your Test & Measurement Needs

8715 Mesa Point Terrace San Diego, CA 92154
 Toll Free: 1.866.363.6634 Tel: 1.619.429.4545 Fax: 1.619.374.7012
 Email: sales@calright.com <http://www.calright.com>