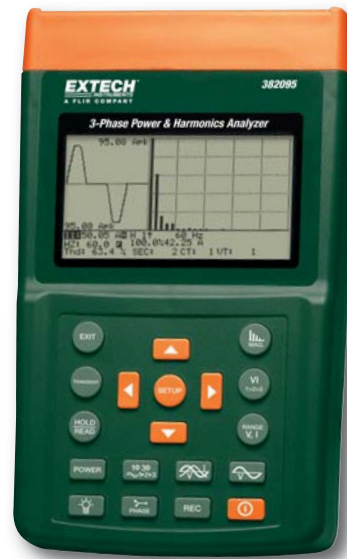


1000A 3-Phase Power & Harmonics Analyzer

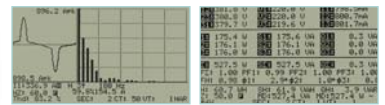
For Power Measurements and Analysis plus Datalogging
Of single and 3-phase/3-wire or 3-phase/4-wire systems plus datalogs to 52,428 single phase readings or 17,476 3-phase readings

Features:

- Large backlighting LCD displays up to 35 parameters in one screen
- Clamp-on True RMS power measurements with on-screen Harmonics display
- Simultaneous display of Harmonics and Waveform
- Display of Waveform with Peak Values (1024 samples/period)
- Analysis of Total Harmonic Distortion (THD-F)
- Maximum Demand (MDkW, MW, kVA, MVA) with programmable period
- Adjustable CT ratio (1 to 600) and VT ratio (1 to 3000)
- Graphic Phase diagram with 3-Phase system parameters
- 3-phase Voltage or Current Unbalanced Ratio (VUR, VIR) and Unbalanced Factor (d0%, d2%)
- Calculated Unbalanced Current through Neutral Line (In)
- Capture 28 Transient events (including Dip, Swell and Outage) with programmable threshold (%)
- Optically isolated RS-232 interface with software to download Waveforms, Power Parameters and Harmonics
- Complete with 4 voltage leads with alligator clips, 8 AA batteries, AC adaptor, software, PC interface cable, and case

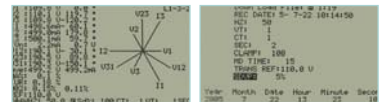


Meter Displays



Harmonics Analysis

Power Analysis



Phase Analysis

Internal Menu

Software PC Displays



Software Harmonics Phase Analysis

Software Harmonics Analysis

Specifications	Range	Basic Accuracy
ACV (True rms)	600V	±(0.5%rdg+5d)
ACA	1000A	±(0.5%rdg+5d)
Active Power (kW)	9.999MW	±(1%rdg+8d)
Apparent Power (kVA)	9999kVA	VA=Vrms x Arms
Reactive Power (kVAR)	9999kVAR	VAR= sqrt (VA ² -W ²)
Power Factor	0.0 to +1.00	±(1.5% ^{rdg} +8d)
Frequency	45-65Hz	0.1Hz
Phase	-180.0°~ 0°~ +180.0°	±1°
Harmonics	1 to 99	±2%
Crest Factor	1.00 to 99.99	±(5%+30d)
Peak AC Voltage accuracy		±(5%rdg+30d)
Peak AC Current accuracy		±(5%rdg+30d)
Active Power Energy (kWh)	0mWh to 999,999kWh	
Reactive Power Energy (kVARh)	0.0kVARh to 1000MWh	
Datalogging	52428 records (single phase)/17476 records (3 phase)	
Dimensions/Weight	10.1 x 6.1 x 2.3" (257 x 155 x 57mm)/ 2.5 lbs (1160g)	

Ordering Information:

- 3820951000A 3-Phase Power Harmonics Analyzer (120V)
 3820961000A 3-Phase Power Harmonics Analyzer (220V)
 Accessories
 382000Voltage Test Leads with Alligator and Plunger Clips (4 leads)
 382097100A Current Clamp Probes (Set of 3)
 3820983000A, Flexible Current Probes (Set of 3)
 USB100.....RS-232 to USB Adaptor

Optional Clamp Probes

Choose the best clamp probes to fit your application needs ranging from 100A to 3000A and flexible vs traditional jaw type.



Model 382098
3000A (24"/609mm)
Flexible Current Clamp
Probes for wrapping
around busbars



Model 382097
100A Current Clamp
Probes with 1.2" (30mm)
jaw size