

Heavy Duty Light Meter with PC Interface

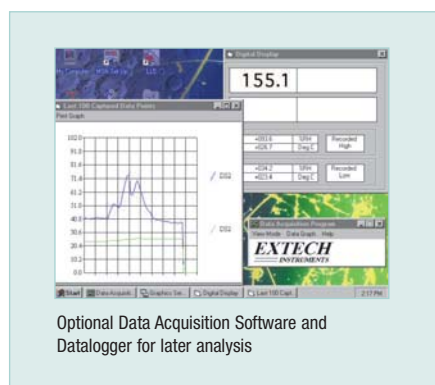
- ✓ Simultaneous display of Foot Candles or Lux
Plus four lighting types - now includes Sodium light measurements

Features:

- Microprocessor assures maximum accuracy plus special functions
- Fc Range: 200.0, 2000, 5000Fc
Lux Range: 2000, 20,000, 50,000Lux
- Basic accuracy of $\pm 4\%$ FS
- Large 1.4" (1999 count) LCD display
- % displays differential from reference point
- "ZERO" Re-Calibration
- Utilizes precision photo diode and color correction filter
- Cosine and color corrected measurements
- $\pm 4\%$ accuracy is enhanced by selecting lighting type (Tungsten/Daylight, Fluorescent, Sodium, Mercury)
- Record/Recall MIN, MAX and AVG readings
- Data Hold plus Auto shut off
- Built-in RS-232 serial interface, optional software
- Dimensions: 7 x 2.9 x 1.3" (178 x 74 x 33mm);
Weight: 1.6lbs. (726g)
- Complete with 9V battery, light sensor with 45" (1.1m) cable, protective cover, and holster with stand

Interface Options:

- Optional Windows[®] Data Acquisition Software and serial cable enable user to display and capture readings on a PC, and set time intervals and alarms
- Optional battery operated Datalogger module stores over 8000 readings for later transfer to a PC



Ordering Information:

- 407026Foot Candle/Lux Meter
407026-NIST407026 with NIST Certificate
156119117V AC Adaptor
156221220V AC Adaptor
409997Large Soft Vinyl Pouch Carrying Case
140001Hard Vinyl Case with Handle (for Heavy Duty Series)
407001Data Acquisition Software & Serial Cable
407001-USBUSB Adaptor for 407001
380340Battery Operated Datalogger Module