

pressure

JOFRA™

Wide pressure range

16 pressure ranges, ranging from 25 mbar (0.35 psi) to 700 bar (10,000 psi) F.S. Absolute, differential and gauge sensors.

High accuracy

±0.025% of reading +0.01% F.S.

True field calibrator

Fully temperature compensated

Single or dual sensor versions

Select HPC500 single or HPC502 dual range calibrators and eliminate the need for 2 separate calibrators.

Full set of intelligent features

Whole selection of useful functions and features. Damping, leak test, % error calculation, min/max, switch test, etc.

Thermometer

High accuracy thermometer, Pt100 sensor.

External Pressure Modules

More than 60 different pressure modules, accuracy up to 0.01% F.S.

ISO 9001 Manufacturer

Specification Sheet
SS-HPC500

Handheld Pressure Calibrator Model HPC500 Family



JOFRA HPC500 calibrators feature deadweight tester accuracy in a modern digital package. The HPC is available as an independent calibrator or in one of 6 ready-for-test systems that are complete and equipped to meet any need for pressure calibration.

The HPC500 may be used in a very broad range of applications from simple tool type jobs to complex calibration jobs in custody transfer systems.

The JOFRA HPC500 calibrators introduce a new generation of AMETEK handheld pressure calibrators. This series has been designed to meet high accuracy pressure calibration applications and facilitate your tasks. The HPC offers features such as user configurable information display, 15 different pressure units, transmitter supply, mA input, % error calculation, voltage measurement, serial communication, and external pressure module capability. The accuracy of the HPC500 calibrators is specified in % of reading to ensure an even better accuracy and wider applicable pressure range. The HPC is temperature compensated from 0 to 50°C / 32 to 122°F for on-site operation. It is a truly superior pressure calibrator for laboratory and field use, bringing laboratory accuracy into the field.

The JOFRA APM series of pressure modules extends the application base of the HPC calibrators by allowing calibrations in additional ranges. The APM modules are compatible with several other JOFRA calibrators.

Calibration of the instrument may be performed locally without returning the HPC unit to the manufacturer. Adjustment software is part of the design - you just need an accurate pressure reference and a PC. If factory calibration is required, the pump and the calibrator are independent units and only the calibrator needs to be returned.

AMETEK®
CALIBRATION INSTRUMENTS

**CALRIGHT
INSTRUMENTS**

The Right Source For Your Test & Measurement Needs

2222 Verus Street Suite C San Diego CA 92154 USA
Toll Free: 866.363.6634 Tel: 619.429.4545 Fax: 619.374.7012
Email: sales@calright.com <http://www.calright.com>

Clear graphical display

Large backlight graphical display. Icons show current status and mode, 1, 2 or 3 measurement windows, to suit your applications and demands.

Intuitive menu system

Combination of “soft keys” and cursor keypad ensures easy operation

Electrical connections

HPC calibrators are well equipped and include inputs for mA, voltage, switches and temperature measurements, including 24 VDC supply for mA transmitters.

Serial interface

Connection for JOFRA APM pressure module and computer.



Zero

To keep high accuracy, a dedicated zero button is available to provide convenient zero before test.

Temperature measurement

High accuracy temperature measurement port by use of the optional Pt100 sensor. A superb instrument for easy and convenient temperature measurement.

Pressure connections

1/8" BSP female. 300 series stainless steel. 1/4" NPT male and 1/4" BSP female adapters are supplied as standard.

Full set of features

Perform semi-automatic pressure switch tests, leak test, % error calculation, switch in HART resistor or other calibration tasks through the outstanding functions and features of the HPC500.

ON / OFF

Auto shut-off to expand battery life time (user programmable).

Units

15 different engineering units on pressure measurements.

JOFRACAL CALIBRATION SOFTWARE

Available from 2010

JOFRACAL calibration software ensures easy calibration of RTD's, thermocouples, transmitters, thermowithes, pressure gauges and pressure switches. JOFRACAL can be used with JOFRA DPC-500, HPC500, HPC502 and IPI pressure calibrators, all JOFRA temperature calibrators, as well as JOFRA AMC910, ASC300 multi signal calibrator and ASM-800 signal multi scanner. When used with JOFRA ASM-800 signal multi scanner, JOFRACAL can perform a simultaneous semiautomatic calibration of up to 24 pressure and/or temperature devices under test in any combination.

JOFRACAL software controls the complete calibration procedure, stores the results and provides a calibration audit trail through hard-copy certificates. All calibration data are stored for each sensor to monitor drift and optimize recalibration intervals. A scheduler feature allows planning of future calibrations.

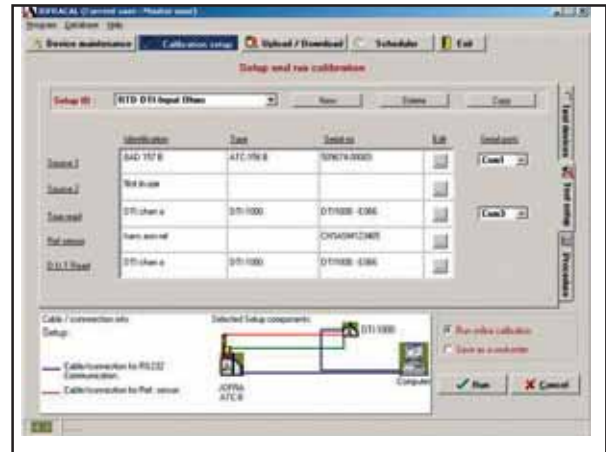
The JOFRACAL temperature calibration software may be downloaded free of charge from our website.



JOFRA APM pressure module

The JOFRA APM external pressure modules extend the range of the JOFRA HPC. There are more than 60 models available with gauge, absolute, differential, and vacuum pressure references, in metric and imperial engineering units.

The modules are engineered for in-plant, field, or laboratory use. They are ready-to-use with the JOFRA HPC and the protocol allows for immediate recognition and use of the module once it is plugged into the calibrator.



REQUIREMENTS JOFRACAL

Minimum hardware requirements:

- Intel® Pentium® II 1.4 GHz processor
- 64MB RAM (1 28MB recommended)
- 400MB free disk space on hard disk (500MB recommended) prior to installation
- Standard VGA (800x600, 256 colours). 1024x768 recommended
- CD-ROM drive or USB port for installation of program
- 1 or 2 free RS-232 serial ports, depending on configuration

Minimum software requirements:

- Microsoft Windows® XP, Vista.
- System fonts: MS Sans Serif and Arial

FUNCTIONAL SPECIFICATIONS

Pressure; gauge / compound ranges

bar vacuum to 1, 2, 7, 20 & 35
psi..... vacuum to 15, 30, 100, 290 & 500

Pressure; gauge

bar70, 200, 350 & 700
psi.....1,000, 3,000, 5,000 & 10,000

Pressure; absolute ranges

bar 0 to 1.1, 2, 7 & 20
psi..... 0 to 16, 30, 100 & 290

Pressure; differential ranges (HPC500 only)

mbar ± 25 , ± 70 & ± 350
psi..... ± 0.35 , ± 1 & ± 5

Engineering units (built-in)

User selectable..... 15 units
(bar, mbar, MPa, kPa, inHg@0°C, mmHg@0°C, kg/cm², mmH₂O@4°C, mmH₂O@20°C, psi, inH₂O@4°C, inH₂O@20°C, inH₂O@60°F, cmH₂O@4°C, cmH₂O@20°C)

Pressure accuracy ambient temp. (18 to 28°C / 65 to 82°F)

± 25 mbar / 0.35 psi..... $\pm 0.10\%$ F.S.
 ± 70 , 350 mbar / 1, 5 psi..... $\pm 0.05\%$ F.S.
All other pressure ranges $\pm 0.025\%$ RDG + 0.01% F.S.
Vacuum $\pm 0.025\%$ F.S.
F.S. (full scale) is the numerical value of the positive pressure range.

Pressure accuracy ambient temp. (0 to 50°C / 32 to 122°F)

± 25 mbar / 0.35 psi..... $\pm 0.15\%$ F.S.
 ± 70 , 350 mbar / 1, 5 psi..... $\pm 0.10\%$ F.S.
All other pressure ranges $\pm 0.04\%$ RDG + 0.01% F.S.
Vacuum $\pm 0.05\%$ F.S.
F.S. (full scale) is the numerical value of the positive pressure range.
Temperature effect -10 to 0°C / 14 to 32°F $\pm 0.005\%$ F.S./°C.

Display

LCD Graphical (with light)
Display resolution..... 5 digits
Display update 3 times per second

RS232 communication interface

Connector..... LEMO
Serial..... 0-5 VDC, 9600 baud, 8 data, no parity, 1 stop
Protocol..... ASCII command language

Input / output (18 to 28°C / 65 to 82°F)

mA range 0 to 24 mA
mA accuracy $\pm 0.015\%$ RDG + 2 μ A
Transmitter supply..... 24 VDC $\pm 10\%$
Voltage measurement 0 to 30 VDC
Voltage accuracy..... $\pm 0.015\%$ RDG + 2 μ V
RTD range (ohms) 84 to 140 Ω
RTD accuracy..... $\pm 0.015\%$ RDG + 0.02 Ω
RTD range (temperature)..... -40 to 105°C / -40 to 220°F
RTC accuracy @ 0°C/32°F (temperature) $\pm 0.10^\circ\text{C}$ / 0.18°F
HART® resistor 250 Ω
Peak hold capture 50 milliseconds
Switch test input 5V (<1mA)
Temperature effect outside 18 to 28°C / 65 to 82°F $\pm 0.001\%$ F.S./°C.

Media compatibility

Nickel plated brass and 316 stainless steel

Environmental

Operating temperature -10 to 50°C / 14 to 122°F
Storage temperature -20 to 60°C / -4 to 140°F
Ingress protection rating IP54

Pressure connection

All calibrators 1/8" BSP female
Adapters to 1/4" NPT male and 1/4" BSP female are included as standard.

Pressure overload

Overload alarm "OL" in display at approx. +20% F.S.

Power supply

Battery 4 x 1.5 VDC Alkaline
Battery type..... AA, LR6, MN1500, AM3
Battery lifetime Typically more than 35 hours
Low battery calibrator Yes

Instrument dimensions (LxWxH)

Calibrator..... 201x99x50 mm / 8.3x3.9x2.0 in
HPC500 weight (incl. battery) 635 g / 22.4 oz
HPC502 weight (incl. battery) 665 g / 23.5 oz
Calibrator, shipping 243x180x80 mm / 9.6x7.1x3.1 in
Calibrator weight, shipping 1.1 kg / 39.5 oz

Miscellaneous

Compliance: EN 61326 : 2006 & CISPR 11, Edition 5.0 - 2009 Class "B"



Function / Feature	HPC500	HPC502
Single sensor high accuracy pressure calibrator	Yes	-
Dual sensor high accuracy pressure calibrator	-	Yes
mA measurement	Yes	Yes
Voltage measurement	Yes	Yes
24 VDC transmitter supply	Yes	Yes
High speed pressure switch test	Yes	Yes
Temperature measurement with external RTD sensor	Yes	Yes
JOFRA APM pressure module connection	Yes	Yes
RS232 communication	Yes	Yes
On-line calculation of sensor errors %	Yes	Yes
Automatic leak test timer function	Yes	Yes
High speed min./max. hold	Yes	Yes
Delta / summary calculation on pressure measurements	Yes	Yes
Display contrast adjustment	Yes	Yes
Instrument setup lock	Yes	Yes
Storage of 5 setups	Yes	Yes
Setup of automatic off timer	Yes	Yes
Setup of number of display windows / measurement channels	Yes	Yes
Setup of temperature sensor RTD type	Yes	Yes
Select display high or low resolution	Yes	Yes
Setup of backlight timer	Yes	Yes
HART resistor on/off	Yes	Yes
Normal or damped display update rate	Yes	Yes



HPC500 PRESSURE RANGES

This table shows the resolutions that can be obtained by the HPC calibrators throughout all engineering units.

HPC500/HPC502 Ranges and Resolutions													
Range (bar)	25mbar	70mbar	350mbar	1	1.1	2	7	20	35	70	200	350	700
Burst pressure (bar)	1.4	1.4	7	20	20	20	70	133	133	677	677	677	1000
Proof pressure (bar)	70mbar	200mbar	1	2	2	4	14	40	67	200	400	677	1000
Static pressure (bar)	70mbar	7	7	n/a	n/a	n/a	n/a	n/a	n/a	n/a	n/a	n/a	n/a
Range (psi)	0.4	1	5	15	16	30	100	300	500	1000	3000	5000	10000
Burst pressure (psi)	10	10	100	300	300	300	1000	2000	2000	10000	10000	10000	15000
Proof pressure (psi)	1	3	15	30	30	60	200	600	1000	3000	6000	10000	15000
Static pressure (psi)	1	100	100	n/a	n/a	n/a	n/a	n/a	n/a	n/a	n/a	n/a	n/a
psi	0.4000	1.0000	5.0000	15.000	16.000	30.000	100.00	300.00	500.00	1000.00	3000.00	5000.00	10000.00
bar	0.0689	0.0689	0.3447	1.0342	1.1032	2.0684	6.8947	20.684	34.474	68.947	206.84	344.74	689.47
mbar	27.579	68.948	344.74	1034.2	1103.2	2068.4	6894.8	20684	344.74	689.48	n/a	n/a	n/a
kPa	2.7579	6.8948	34.474	103.42	110.32	206.84	689.48	2068.4	344.74	689.48	2068.4	3447.4	68948
MPa	0.0028	0.0068	0.0344	0.1034	0.1103	0.2068	0.6894	2.0684	3.447	6.8948	20.684	34.474	68.948
kg/cm ²	0.0281	0.0703	0.3515	1.0546	1.1248	2.1092	7.0307	21.092	35.153	70.307	210.92	351.53	703.07
cmH ₂ O@4°C	28.124	70.309	351.54	1054.6	1124.9	2109.3	7030.9	21093	35154	70309	n/a	n/a	n/a
cmH ₂ O@20°C	28.173	70.434	352.17	1056.5	1126.9	2113.0	7043.4	21130	35217	70434	n/a	n/a	n/a
mmH ₂ O@4°C	281.24	703.09	3515.4	10546	11249	21093	70309	n/a	n/a	n/a	n/a	n/a	n/a
mmH ₂ O@20°C	281.73	704.34	3521.7	10565	11269	21130	70434	n/a	n/a	n/a	n/a	n/a	n/a
inH ₂ O@4°C	11.072	27.681	138.40	415.21	442.89	830.42	2768.1	8304.2	13840	27681	83042	n/a	n/a
inH ₂ O@20°C	11.092	27.730	138.65	415.95	443.68	831.89	2773.0	8318.9	13865	27730	83189	n/a	n/a
inH ₂ O@60°F	11.083	27.708	138.54	415.61	443.32	831.23	2770.8	83123	13854	27708	83123	n/a	n/a
mmHg@0°C	20.686	51.715	258.58	775.73	827.44	1551.5	5171.5	15515	25858	51715	n/a	n/a	n/a
inHg@0°C	0.8144	2.0360	10.108	30.540	32.576	61.081	203.6	610.81	1018.0	2036.0	6108.1	10180	20360

Proof pressure - maximum allowable pressure without a shift in calibration.

Burst pressure - sensor damaged or destroyed, some risk of personal injury.

Static pressure - Differential units only. Maximum allowed common mode pressure between both points.

Compound ranges - the data for the 1 bar range also applies to the -1 to +1 bar compound range, the data for the 2 bar range also applies to the -1 to +2 bar compound range.

Absolute ranges - the data for the 1.1, 2, 7 and 20 bar ranges also applies to the absolute pressure versions of those ranges.

STANDARD DELIVERY (HPC Calibrator)

- HPC500 or HPC502 calibrator
- Traceable calibration certificate (NIST) with pressure and vacuum performance
- 4 x 1.5 volt batteries
- Adapter to 1/4" NPT male from 1/8" BSP male*
- Adapter to 1/4" BSP female from 1/8" BSP male*
- 1/8" sealed gasket / washer type
- Test leads: red and black
- Hand strap with clip
- User manual

* Set for each pressure port



HPC500, System A

- AXH/0 to 2 bar (0 to 30 psi)
- AHX/0 to 40 bar (0 to 580 psi)



This system includes the HPC calibrator together with one pneumatic hand pump: T-960 and T-970, depending on the chosen pressure range. System A is an easy-to-use single hand operated calibration system. No need for a flat surface to operate the system - just hold it in your hand.

The system comes in a carrying case with cut-outs for fittings, hose, and the complete assembled calibration unit - no time is required to assemble the unit. The calibrator can at any time be used separately for other pressure test jobs.

A special quick connector between the pump and the calibrator makes it possible to separate the system in seconds and swivel the calibrator for easy viewing.

The HPC calibrators used in System A are delivered calibrated in both pressure and vacuum.

T-960 and T-970 pumps for system A

Model T-960 pneumatic pressure pump features an extended range volume adjuster for precise control of the pump pressure and a comfortable pistol grip handle.

Model T-970 pneumatic pressure pump is similar to the T-960, but generates pressures up to 40 bar (580 psi).

Pressure range, T-960.....	0 to 2 bar / 0 to 30 psi
Pressure range, T-970.....	0 to 40 bar / 0 to 580 psi
Type.....	Pneumatic
Test medium.....	Air
Operation.....	Scissor
“O”-rings	Buna-N
Wetted parts.....	Aluminum, brass, stainless steel, nylon, Nylatron GS
Connection to test object.....	Hose 0.6 m/24 in with 1/4” BSP and NPT female terminations
Size.....	21.6x12.1x6.2 cm / 8.5x4.8x2.4 in
Weight	1.4 kg / 3.0 lb

Included with System A delivery

- HPC standard delivery (see page 6)
- Hand pump T-960 or T-970 with a 0.6 m / 24 in hose with 1/4” BSP and NPT female terminations
- 3/8” BSP female adapter with 1/4” BSP and NPT female terminations
- Quick connector between pump and HPC calibrator
- 1 roll of Teflon tape
- Protective carrying case

Accessories

- Pressure hose for T-960/970, 0.5 meter
- Pressure hose for T-960/970, 1.0 meter
- Pressure hose for T-960/970, 2.0 meter
- Pressure hose for T-960/970, 5.0 meter
- Set of BSP female fittings, Teflon tape, packings
* Fitting size : 1x1/8”, 1x3/8”, 1x1/2”
- Set of NPT female fittings, Teflon tape, packings
* Fitting size : 1x1/8”, 1x1/4”, 1x3/8” 1x1/2”
- Connections for APM H/S pressure modules
- Fitting 1/8” NPT male to 1/4” NPT male for APM-H pressure module
- Fitting 1/4” NPT male to 1/4” NPT male for APM-S pressure module

HPC500, System B

- BXX/Vacuum to 2 bar (30 psi)
- BHX/Vacuum to 40 bar (580 psi)



This system includes the dual function pneumatic hand pump. With this pump you can calibrate both vacuum and pressure applications. It takes just a few seconds to switch between vacuum and pressure, just push one button (valve) on the T-975 hand pump.

The System B comes in a carrying case with cut-outs for fittings, hose and the complete assembled calibration unit - no time required to assemble the unit before use.

The calibrator and the pump are fitted with a special quick connector that makes it possible to separate the system in seconds without any tool. This quick connector also makes it possible to use the assembled system with the calibrator twisted to any angle.

T-965 and T-975 hand pumps for system B

Model T-965 and T-975 pneumatic pressure pumps feature both vacuum and pressure generation. A quick switch (valve) makes it easy to switch from vacuum to pressure measurement. A built-in release valve, volume adjuster for fine adjustment and dual pressure output enable a safe and simple operation. The unit offers both metric and imperial threads on the reference connection and the hose.

Pressure range, T-965.....	vacuum to 2 bar (30 psi)
Pressure range, T-975.....	vacuum to 40 bar (580 psi)
Type.....	Pneumatic
Test medium.....	Air
Operation.....	Scissor
“O”-rings	Buna-N
Wetted parts.....	Aluminum, brass, stainless steel, nylon, Nylatron GS
Connection to test object.....	Hose 0.6 m/24 in with 1/4” BSP and NPT female terminations
Size.....	21.6x12.1x6.2 cm / 8.5x4.8x2.4 in
Weight	1.4 kg / 3.0 lb

Included with System B delivery

- HPC standard delivery (see page 6)
- Hand pump T-965 or T-975 with a 0.6 m / 24 in hose with 1/4” BSP and NPT female terminations
- 3/8” BSP female adapter with 1/4” BSP and NPT female terminations
- Quick connector between pump and calibrator
- 1 roll of Teflon tape
- Protective carrying case

Accessories

- Pressure hose for T-975, 0.5 meter
- Pressure hose for T-975, 1.0 meter
- Pressure hose for T-975, 2.0 meter
- Pressure hose for T-975, 5.0 meter
- Set of BSP female fittings, Teflon tape, packings
* Fitting size : 1x1/8”, 1x3/8”, 1x1/2”
- Set of NPT female fittings, Teflon tape, packings
* Fitting size : 1x1/8”, 1x1/4”, 1x3/8” 1x1/2”
- Connections for APM H/S pressure modules
- Fitting 1/8” NPT male to 1/4” NPT male for APM-H pressure module
- Fitting 1/4” NPT male to 1/4” NPT male for APM-S pressure module

HPC500, System C

- CXX/0 to 200 bar (3,000 psi)
- CHX/0 to 350 bar (5,000 psi)



This system consists of an HPC calibrator together with a hydraulic, high pressure hand pump T-620 or T-620H featuring an oil reservoir to prime the system.

System C is an easy-to-use single hand-operated calibration system. No need for a flat surface (table) to operate the system. The system includes release valve and volume adjuster for fine adjustment to enable a safe and simple operation of the pump.

The System C comes in a carrying case with cut-outs for fittings, hose, and the complete assembled calibration unit - no time adder to assemble the unit before use. Easy and fast connection between pump and calibrator makes it easy to use the pressure calibrator separately for other pressure test jobs.

AMETEK hydraulic hand pump for system C

This easy-to-use hand pump is specially designed for high pressure applications. The pump has a built-in reservoir, vent valve, and volume adjuster for fine adjustment. The pump has a dual pressure output - one for the test object and one for the HPC calibrator.

Pressure range, T-620.....	0 to 200 bar (3,000 psi)
Pressure range, T-620H.....	0 to 350 bar (5,000 psi)
Type.....	Hydraulic
Test medium.....	Oil
Operation.....	Scissor
Reservoir capacity.....	200 cl / 0.42 pint
Operation.....	Pistol-grip
“O”-rings	Buna-N
Wetted parts.....	Aluminum, brass, stainless steel, Lexan
Connection to test object.....	Hose 0.6 m/24 in with 1/4” BSP and NPT female terminations
Size.....	21.6x12.1x6.2 cm / 8.5x4.8x2.4 in
Weight	1.4 kg / 3.0 lb

Included with System C delivery

- HPC standard delivery (see page 6)
- Hand pump T-620 or T-620H with a 0.6 m / 24 in hose with 1/4” BSP and NPT female terminations
- 1 roll of Teflon tape
- Protective carrying case

Accessories

- Pressure hose for T-620/T-620H pumps
- 1 m hose with 1/4” BSP female termination Max. pressure 350 bar (5,000 psi)
- 2 m hose with 1/4” BSP female termination Max. pressure 350 bar (5,000 psi)
- Oil for T-620 & T-1 pump AAA OIL in 1-QUART CAN
- Oil for T-620 & T-1 pump AAA OIL in 1-GALLON CAN
- Connections for APM H/S pressure modules
- Fitting 1/8” NPT male to 1/4” NPT male for APM-H pressure module with system C
- Fitting 1/8” NPT male to 1/8” NPT male for APM-H pressure module with system C
- Fitting 1/8” NPT male to 1/4” NPT male for APM-H pressure module
- Fitting 1/4” NPT male to 1/4” NPT male for APM-S pressure module

HPC500, System D

- DOX/0 to 350 bar (5,000 psi) oil
- DWX/0 to 350 bar (5,000 psi) water



This system consists of an HPC calibrator with a hydraulic, high pressure screw pump. System D is an easy-to-use calibration system. Place the pump on a flat surface and turn the handle to generate pressure. The calibrator may be adjusted to give the best viewing angle. The system includes a manifold for connection of the test device, a fine adjustment volume adjuster (optional), and a reservoir for extra oil or water (optional).

The system comes in a carrying case with cut-outs for fittings and the complete assembled calibration unit - no time adder to assemble the unit before use. Easy and fast connection between pump and calibrator makes it easy to use the pressure calibrator separately for other pressure test jobs.

AMETEK spindle pump for system D

The spindle pumps are designed for easy generation of high pressure. The spindle pumps have a 4-connection manifold. Fine adjustment, extra fine volume adjuster, liquid reservoir, and fittings are optional. Spindle pumps may be delivered for 2 different test media: hydraulic oil or water.

Pressure range	0 to 350 bar (5,000 psi)
Type.....	Hydraulic
Test medium.....	Hydraulic oil, water
Operation.....	Spindle pump
Reservoir capacity.....	250 cl / 0.53 pint
“O”-rings	Buna-N
Wetted parts.....	Aluminum, brass, stainless steel
Connection to test object.....	4 x 1/4” BSP female
Size.....	36.6x19.5x10.5 cm / 14.4x7.7x4.1 in
Weight	3.7 kg / 8.2 lb

Included with System D delivery

- HPC standard delivery (see page 6)
- Spindle pump for hydraulic oil or for water
- 10 x 1/4” bonded seals
- Allen key 6 mm
- 2 x 1/4” NPT female adapters
- 1 roll of Teflon tape
- Protective carrying case

Accessories

- Extra fine adjuster, volume adjuster
- Reservoir set with seals, valve and bonded seal
- 1 m Pressure hose (Max. 350 bar / 5,000 psi)¹
- 2 m Pressure hose (Max. 350 bar / 5,000 psi)¹
- 1.5 m Pressure hose (Max. 700 bar/10,000psi)¹
- 5 m Pressure hose (Max. 700 bar / 10,000 psi)¹
- Extension tube 120 mm (Max. 350 bar/5,000 psi)¹
- Quick connector set, female 1/4” BSP to 1/4” BSP
- Connections for APM H/S pressure modules
- Fitting 1/4” BSP male x 1/4” BSP male for APM-S pressure module with system D
- Fitting 1/4” BSP male to 1/4” NPT female for APM-H pressure module with system D
- Fitting 1/8” NPT male to 1/4” NPT male for APM-H pressure module with system D
- Fitting 1/4” NPT male to 1/4” BSP female for APM-S pressure module with spindle pump alone
- Fitting 1/8” NPT male to 1/4” BSP female for APM-H pressure module with screw pump alone

¹ 1/4” BSP female to 1/4” BSP male

HPC500, System E

- EXX/0 to 700 bar (10,000 psi)

This system consists of an HPC calibrator together with a rugged, hydraulic, high pressure pump.



System E is an easy-to-use calibration system. The hydraulic pump makes it very easy to prime the system. The calibrator can be adjusted to fit the best viewing angle. The system includes a manifold for connection of two test devices and the fine adjustment volume adjuster is standard.

The System E comes in a carrying case with cut-outs for fittings and the complete assembled calibration unit - no time adder to assemble the unit before use. Easy and fast connection between pump and calibrator makes it easy to use the pressure calibrator separately for other pressure test jobs.

AMETEK high pressure hydraulic oil pump for system E

The hydraulic pump is designed for high pressure applications. The pump has a 4-connection output manifold and a fine adjustment volume adjuster.

Pressure range	0 to 700 bar (10,000 psi)
Type.....	Hydraulic
Test medium.....	Oil
Operation.....	Jack pump
Reservoir capacity.....	500 cl / 1 pint
“O”-rings	Buna-N
Wetted parts.....	Aluminum, brass, stainless steel
Connection to test object.....	4 x 1/4” BSP female
Size.....	36.5x20.0x14.2 cm / 14.4x7.9x5.6 in
Weight	5.3 kg / 11.6 lb

Included with System E delivery

- HPC standard delivery (see page 6)
- Hydraulic pump
- 10 x 1/4” bonded seals
- Allen key 6 mm
- 2 x 1/4” NPT female adapters
- 1 roll of Teflon tape
- Volume adjuster for fine adjustment
- Protective carrying case

Accessories

- Volume adjuster for fine adjustment
- 1.5 m Pressure hose, (Max. 700 bar/10,000 psi)¹
- 5 m Pressure hose, (Max. 700 bar/10,000 psi)¹
- Quick connector set, female 1/4”BSP to 1/4” BSP
- Connections for APM H/S pressure modules
- Fitting 1/4” BSP male x 1/4” BSP male for APM-S pressure module with system E
- Fitting 1/4” BSP male to 1/4” NPT female for APM-H pressure module with system E
- Fitting 1/8” NPT male to 1/4” NPT male for APM-H pressure module with system E
- Fitting 1/4” NPT male to 1/4” BSP female for APM-S pressure module with system E
- Fitting 1/8” NPT male to 1/4” BSP female for APM-H pressure module with Jack-pump alone

¹ 1/4” BSP female to 1/4” BSP male

HPC500, System F

- FOx/0 to 700 bar (10,000 psi) oil
- FWx/0 to 700 bar (10,000 psi) water

System F is an easy-to-use calibration system. The hydraulic pump makes it very easy to prime the system. The pump contains 1.23 l of liquid.



The system includes a manifold for connection of two test devices and the volume adjuster for fine adjustment is standard. System F comes in a protective carrying case with cut-outs for fittings. Easy and fast connection between pump and calibrator makes it easy to use the pressure calibrator separately for other pressure test jobs.

The pump is designed for high pressure applications up to 15,000 psi (1,000 bar). The pump and system may be ordered with either oil or a water/alcohol mixture as pressure medium. The pump is constructed of 300 series stainless steel and Monel allowing for the use of other hydraulic media. There are three available seal packages for the system: Buna-N, Viton®, and EPT.

Type T pump for system F

The Type T pump features a dual pressure output manifold, volume adjuster (up to 200 bar / 2,900 psi), relief valve, and dual volume control for rapid pressure increase at lower pressures and easier pumping at higher pressures.

Pressure range	0 to 1,000 bar (15,000 psi)
Type.....	Hydraulic
Test medium.....	Hydraulic oil, water
Operation.....	Jack pump
Reservoir capacity.....	1.23 l / 2.6 pint
“O”-rings	Buna-N (standard) or EPT/Viton (Optional)
Wetted parts.....	Stainless steel, Monel
Connection to test object....	1/4” and 1/2” BSP terminations 1/4” and 1/2” PT female terminations
Size.....	79.4x22.9x50.8 cm / 31.3x9x20 in
Weight	9.1 kg / 20 lbs

Included with System F delivery

- HPC standard delivery (see page 6)
- Hydraulic pump
- 2 x 1/4” bonded seals
- Allen key 6 mm
- 1 roll of Teflon tape
- Protective carrying case

Accessories

- 1.5 m Pressure hose (Max. 700 bar/10,000 psi)¹
- 5 m Pressure hose (Max. 700 bar/10,000 psi)¹
- Oil for T-620 & T-1 pump AAA OIL in 1-GALLON CAN
- Oil for T-620 & T-1 pump AAA OIL in 1-QUART CAN
- Connections for APM H/S pressure modules
- Union Body 1/4” NPT female for manifold pump T
- Fitting 1/8” NPT male to 1/4” NPT male for APM-H pressure module
- Fitting 1/4” NPT male to 1/4” NPT male for APM-S pressure module

¹ 1/4” BSP female to 1/4” BSP male

ORDERING INFORMATION

Order number	Description
HPC	Type
500	Model
NONE	No calibrator, pressure system only
	Pressure range
25MD	±25 mbar / 0.35 psi differential
70MD	±70 mbar / 1 psi differential
350MD	±350 mbar / 5 psi differential
001A	0 to 1.1 bar / 16 psi absolute
001C	Vacuum to 1 bar / 15 psi gauge/compound
002A	0 to 2 bar / 30 psi absolute
002C	Vacuum to 2 bar / 30 psi gauge/compound
007A	0 to 7 bar / 100 psi absolute
007C	Vacuum to 7 bar / 100 psi gauge/compound
020A	0 to 20 bar / 290 psi absolute
020C	Vacuum to 20 bar / 290 psi gauge/compound
035C	Vacuum to 35 bar / 500 psi gauge/compound
070G	0 to 70 bar / 1,000 psi gauge
200G	0 to 200 bar / 2,900 psi gauge
350G	0 to 350 bar / 5,000 psi gauge
700G	0 to 700 bar / 10,000 psi gauge
	Calibration certificate
G	NIST traceable calibration certificate
	Accessories (Optional)
B	Rechargeable battery pack
C	Soft case
I	Interface Kit LEMO to RS232
T	Temperature sensor Pt100
	Pressure system
IND	Calibrator only
AXX	Syst. A, T-960 pump ranges up to 2 bar/30 psi
AHX	Syst. A, T-970 pump ranges up to 35 bar/500 psi
BXX	Syst. B, T-965 pump ranges up to 2 bar/30 psi
BHX	Syst. B, T-975 pump ranges up to 35 bar/500 psi
CXX	Syst. C, T-620 pump ranges up to 200 bar/2,900 psi OIL
CHX	Syst. C, T-620H pump ranges up to 350 bar/5,000 psi OIL
DOX	Syst. D, 65-P016 pump ranges up to 350 bar/5,000 psi OIL
DWX	Syst. D, 65-P017 pump ranges up to 350 bar/5,000 psi WATER
EXX	Syst. E, 65-P014 pump ranges up to 700 bar/10,000 psi OIL
FWB	Syst. F, T-1 pump ranges up to 700 bar/10,000 psi WATER/Buna-N
FWV	Syst. F, T-1 pump ranges up to 700 bar/10,000 psi WATER/VITON
FWE	Syst. F, T-1 pump ranges up to 700 bar/10,000 psi WATER/EPT
FOB	Syst. F, T-1 pump ranges up to 700 bar/10,000 psi OIL
FOV	Syst. F, T-1 pump ranges up to 700 bar/10,000 psi OIL/VITON
FOE	Syst. F, T.1 pump ranges up to 700 bar/10,000 psi OIL/EPT
	Sample order number
HPC 500 035C G BCIT BHX	HPC500, vacuum to 35 bar, NIST traceable certificate, rechargeable battery package, soft case, interface kit, temperature sensor, system B T-975 pump

ORDERING INFORMATION

Order number		Description					
HPC		Type					
502		Model					
NONE		No calibrator, pressure system only					
	Port 1	Port 2	Pressure range (Port 1 - lowest pressure, Port 2 - highest pressure)				
	001A	001A	0 to 1.1 bar/ 16 psi absolute				
	001C	001C	Vacuum to 1 bar / 15 psi gauge/compound				
	002A	002A	0 to 2 bar /30 psi absolute				
	002C	002C	Vacuum to 2 bar / 30 psi gauge/compound				
	007A	007A	0 to 70 bar / 100 psi absolute				
	007C	007C	Vacuum to 7 bar / 100 psi gauge/compound				
	020A	020A	0 to 20 bar /290 psi absolute				
	020C	020C	Vacuum to 20 bar / 290 psi gauge/compound				
	035C	035C	Vacuum to 35 bar / 500 psi gauge/compound				
	070G	070G	0 to 70 bar / 1,000 psi gauge				
	200G	200G	0 to 200 bar / 2,900 psi gauge				
	350G	350G	0 to 350 bar / 5,000 psi gauge				
	700G	700G	0 to 700 bat / 10,000 psi gauge				
		Calibration certificate					
		G	NIST traceable calibration certificate				
		Accessories (Optional)					
		B	Rechargeable battery pack				
		C	Soft case				
		I	Interface Kit LEMO to RS232				
		T	Temperature sensor Pt100				
		Pressure system					
		IND	Calibrator only				
		AXX	Syst. A, T-960 pump ranges up to 2 bar/30 psi				
		AHX	Syst. A, T-970 pump ranges up to 35 bar/500 psi				
		BXX	Syst. B, T-965 pump ranges up to 2 bar/30 psi				
		BHX	Syst. B, T-975 pump ranges up to 35 bar/500 psi				
		CXX	Syst. C, T-620 pump ranges up to 200 bar/2,900 psi OIL				
		CHX	Syst. C, T-620H pump ranges up to 350 bar/5,000 psi OIL				
		DOX	Syst. D, 65-P016 pump ranges up to 350 bar/5,000 psi OIL				
		DWX	Syst. D, 65-P017 pump ranges up to 350 bar/5,000 psi WATER				
		EXX	Syst. E, 65-P014 pump ranges up to 700 bar/10,000 psi OIL				
		FWB	Syst. F, T-1 pump ranges up to 700 bar/10,000 psi WATER/Buna-N				
		FWV	Syst. F, T-1 pump ranges up to 700 bar/10,000 psi WATER/VITON				
		FWE	Syst. F, T-1 pump ranges up to 700 bar/10,000 psi WATER/EPT				
		FOB	Syst. F, T-1 pump ranges up to 700 bar/10,000 psi OIL				
		FOV	Syst. F, T-1 pump ranges up to 700 bar/10,000 psi OIL/VITON				
		FOE	Syst. F, T.1 pump ranges up to 700 bar/10,000 psi OIL/EPT				
		Sample order number					
HPC	502	035C	350G	G	BCIT	BHX	HPC502, port 1: Vaccum to 35 bar, port 2: 0 to 350 bar, NIST traceable certificate, rechargeable battery package, soft case, interface kit, temperature sensor, system B T-975 pump

ACCESSORIES

Rechargeable battery kit - Option B

The HPC500 is available with a set of 4 rechargeable AA batteries and a charger.

Useful soft case - Option C

The HPC500 can be delivered with a soft case as an option. The handy soft case is designed for protection during transport. The soft case has separate compartments for HPC500 (w/Velcro strap), test leads, test hoses, temperature probe, and JOFRA APM pressure module. A shoulder strap ensures convenient transportation when climbing ladders, etc. and the handy strap at the back makes it possible to hang the instrument on a pipe, ladder etc. The manual and calibration documents fit into a pocket on the front of the soft case.

Interface kit - Option I

Special LEMO to Sub D, RS232 interface cable for HPC500 and HPC502.

Temperature sensor - Option T

To utilize the thermometer utility of the HPC500 family, a ruggedized handheld temperature sensor is available. The sensor comes as a ready-to-use probe with handle and coiled cable with LEMO connector for HPC500 and HPC502. The sensor is built with a high accuracy Pt100 element, accuracy $\pm 0.05^{\circ}\text{C}$ / $\pm 0.27^{\circ}\text{F}$. Sensor dimensions, without handle and cable, \varnothing 4x200 mm/stainless steel.

Complete calibration systems

The HPC500 is available as a calibrator only or one of 6 ready-for-test systems that are complete and equipped to meet your pressure calibration needs.



Option C



AMETEK Calibration Instruments is one of the world's leading manufacturers and developers of calibration instruments for temperature, pressure and process signals as well as for temperature sensors both from a commercial and a technological point of view.

JOFRA Temperature Instruments
Portable precision thermometers. Dry-block and liquid bath calibrators: 5 series, with more than 25 models and temperature ranges from -90° to 1205°C / -130° to 2200°F . All featuring speed, portability, accuracy and advanced documenting functions with JOFRACAL calibration software.

JOFRA Pressure Instruments
Convenient electronic systems ranging from -25 mbar to 1000 bar (0.4 to 15,000 psi) - multiple choices of pressure ranges, pumps and accuracies, fully temperature-compensated for problem-free and accurate field use.

JOFRA Signal Instruments
Process signal measurement and simulation for easy control loop calibration and measurement tasks - from handheld field instruments to laboratory reference level bench top instruments.

JOFRA Marine Instruments
A complete range of calibration equipment for temperature, pressure and signal, approved for marine use.

FP Temperature Sensors
A complete range of temperature sensors for industrial and marine use.

M&G Pressure Testers
Pneumatic floating-ball or hydraulic piston dead weight testers with accuracies to 0.015% of reading.

M&G Pumps
Pressure generators from small pneumatic "bicycle" style pumps to hydraulic pumps generating up to 1,000 bar (15,000 psi).

...because calibration is
a matter of confidence

AMETEK[®]
CALIBRATION INSTRUMENTS

**Gi | CALRIGHT
INSTRUMENTS**

The Right Source For Your Test & Measurement Needs

2222 Verus Street Suite C San Diego CA 92154 USA

Toll Free: 866.363.6634 Tel: 619.429.4545 Fax: 619.374.7012

Email: sales@calright.com <http://www.calright.com>