

# Simple Logger® II

## 4-Channel, TRMS Voltage and Current

### Model L564



## FEATURES

- ▶ Four input channels (2 voltage & 2 current)
- ▶ User programmable recording modes: Start/Stop, FIFO, Extended Recording Mode (XRM™) and Alarm Recording
- ▶ Up to 180 days of operation from standard Alkaline batteries
- ▶ Stores 1,000,000 measurements
- ▶ Includes FREE DataView® software for data storage, real-time waveform display, analysis & report generation
- ▶ Wireless Bluetooth data communication
- ▶ Safety Ratings 600V CAT IV; 1000V CAT III

## SPECIFICATIONS



MODEL	L564	
<b>ELECTRICAL</b>		
Channels	Four (two voltage & two current)	
Connection	<b>Current Channel</b>	<b>Voltage Channel</b>
Input Connection	Two	Three recessed banana jacks
Input Range	0 to 1V <sub>AC</sub> *(for use with iron core current probes with a voltage output)	0 to 600V <sub>AC</sub>
Accuracy (50/60Hz)	<b>Probe Output:</b> 0 to 10mV unspecified 10 to 50mV: ±(0.5% of Reading + 1mV) 50 to 1000mV: ±(0.5% of Reading + 0.5mV)	0 to 5V unspecified 5 to 50V: ±(0.5% of Reading + 1V) 50 to 600V: ±(0.5% of Reading + 0.5V)
Input Impedance	100kΩ	16MΩ
Sample Rate	64 samples/cycle	
Storage Rate	Programmable from 125ms to 1 per day	
Storage Modes	Stop when full, FIFO, Extended Recording Mode (XRM™) and Store on Alarm	
Recording Length	15 minutes to 8 weeks, programmable using DataView®	
Memory	1,000,000 measurements (2MB). The recorded data is stored in non-volatile memory and will be retained even if the battery is low or removed.	
Communication	Bluetooth (Class 2)	
Power Source	4 x 1.5V C-cell Alkaline batteries (included)	
Battery Life	Up to 180 days (dependent on storage rate/recording length)	
<b>MECHANICAL</b>		
Dimensions	5.904 x 5.904 x 3.568" (150 x 150 x 91mm)	
Weight (with battery)	2.1 lbs (0.95kg)	
Case	UL94-V0	
Vibration	IEC 68-2-6 (1.5mm, 10 to 55Hz)	
Shock	IEC 68-2-27 (30G)	
Drop	IEC 68-2-32 (1m)	

## APPLICATIONS

- ▶ Single/split phase and 2 phase load monitoring
- ▶ Neutral and ground voltage/current current monitoring
- ▶ Intermittent problem detection
- ▶ Harmonic voltage and current monitoring using DataView® software
- ▶ Residential power monitoring
- ▶ Fault voltage detection
- ▶ Load profiling



Model L564 input connections

\* Compatible with MN93, MN193 and SR193 Probes



The Right Source For Your Test & Measurement Needs

2222 Verus Street Suite C San Diego CA 92154 USA  
 Toll Free: 866.363.6634 Tel: 619.429.4545 Fax: 619.374.7012  
 Email: sales@calright.com <http://www.calright.com>

# DataView®

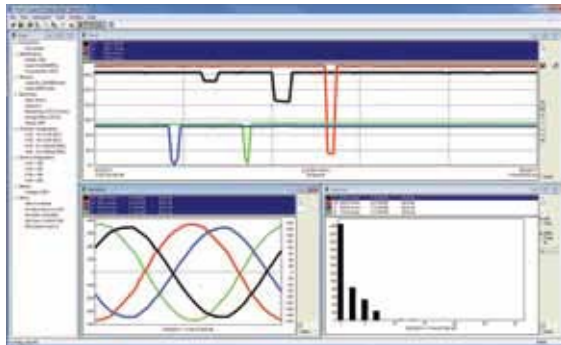
## Data Analysis and Reporting Software for Data Loggers

### Configure all data logger functions of the Simple Logger II Models

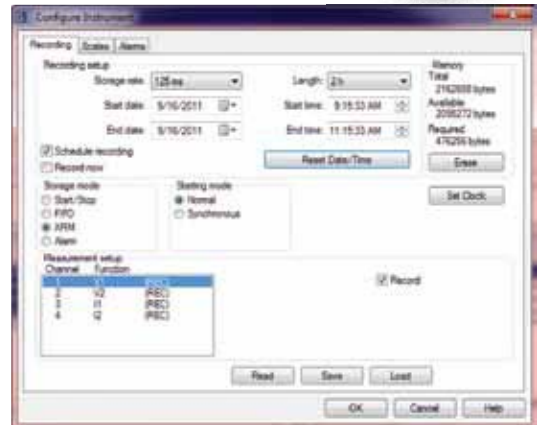
- Display and analyze real-time data on your PC
- Configure all data logger functions and parameters from your PC including sample rate, recording length, channel configuration and more
- Create and store a complete library of configurations that can be uploaded to the logger as needed
- Zoom in and out and pan through sections of the graph to analyze the data
- Download, display and analyze recorded data
- Display waveforms, trend graphs, harmonics (AC models) and text summaries
- Create custom views and reports
- Print reports using standard or custom templates you design
- Free software upgrades are available on our website [www.aemc.com](http://www.aemc.com)



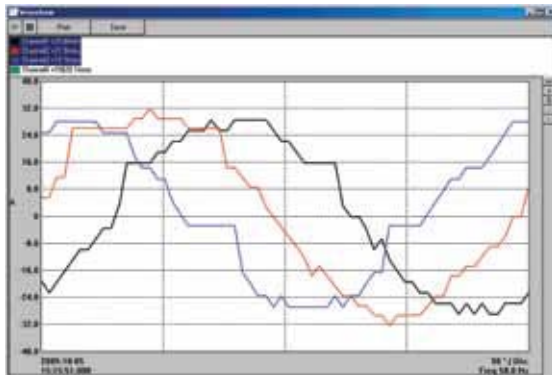
DataView® is included with all Simple Logger II Models.



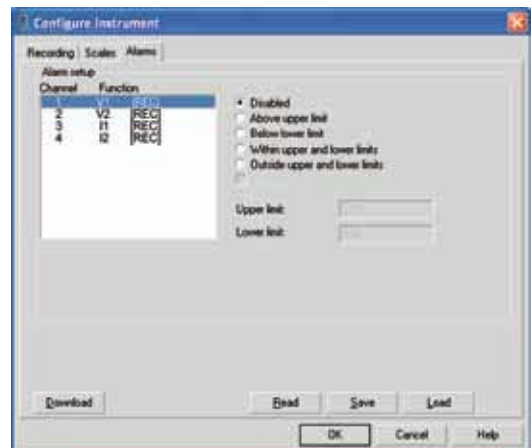
Real-time view of trend, waveform and status screens.



Quick and simple configuration of all functions and settings from one dialog box.



Real time display of all active inputs on computer through DataView® software.



Configure all alarm functions with straightforward selections.



The Right Source For Your Test & Measurement Needs

2222 Verus Street Suite C San Diego CA 92154 USA  
Toll Free: 866.363.6634 Tel: 619.429.4545 Fax: 619.374.7012  
Email: [sales@calright.com](mailto:sales@calright.com) <http://www.calright.com>