



cover closed

4-Channel MiniFlex® Model ML914

Four channel logger includes four integral 6" flexible current probes

► SPECIFICATIONS

MODEL	ML914	
ELECTRICAL		
Channels	Four	
Input	6" Captive AC MiniFlex® Flexible Sensors	
Range	1 to 100Aac	5 to 1000Aac
Accuracy (50/60Hz)	0 to 1A unspecified 1 to 100A: ±(1% of Reading + 0.5A)	0 to 5A unspecified 5 to 1000A: ±(1% of Reading + 1A)
Resolution	0.1A	
Sample Rate	64 samples/cycle	
Storage Rate	Programmable from 125ms to 1 per day	
Storage Modes	Start/Stop, FIFO, Extended Recording Mode (XRM™)	
Recording Length	15 minutes to 8 weeks, programmable using DataView®	
Memory	1,000,000 measurements (2MB) The recorded data is stored in non-volatile memory and will be retained even if the battery is low or removed.	
Communication	Bluetooth connection (communicates up to 30 ft)	
Power Source	4 x 1.5V C-cell Alkaline batteries (included)	
Battery Life	Up to 180 days (dependent on storage rate/recording length)	
MECHANICAL		
Dimensions	5.904 x 5.904 x 3.568" (150 x 150 x 91mm) w/o Sensor	
Max Conductor Size	1.77" (45mm) diameter	
Weight (with battery)	2.4 lbs (1.1kg)	
Case	UL94-V0	
Vibration	IEC 68-2-6 (1.5mm, 10 to 55Hz)	
Shock	IEC 68-2-27 (30G)	

► FEATURES

- Includes four integral MiniFlex® flexible current probes that will measure up to 1000A TRMS with 0.1A resolution
- Dual range 100/1000A user selectable per channel
- 64 samples per cycle
- Programmable storage rates from 125ms to 1 per day
- 4 user selectable storage modes
- Stores up to 1,000,000 measurements in non-volatile memory
- Powered by standard Alkaline batteries for a period of up to 180 days
- Lightweight and compact
- 6 LED indicators quickly and clearly display logger status
- Wireless Bluetooth data communication (Class 2 Bluetooth module included)
- Includes FREE DataView® software for data storage, real-time display, analysis and report generation
- EN 61010-1; 600V CAT IV, 1000V CAT III

► APPLICATIONS

- Single/Split phase and 3 phase load monitoring
- Neutral and ground current monitoring
- Intermittent problem detection
- Harmonic current monitoring using DataView® software
- Machine load monitoring
- Fault current detection
- Load profiling

► PRODUCT INCLUDES



Bluetooth USB adapter, twelve color-coded input ID markers, mounting hardware, 4 x 1.5V C-Cell Alkaline batteries, USB cable for firmware updates, and USB stick supplied with DataView® software and user manual.

CATALOG NO.	DESCRIPTION
2126.40	Simple Logger® II Model ML914 (4-Channel, TRMS, Bluetooth, MiniFlex® 100/1000Aac, DataView® software)

CALRIGHT INSTRUMENTS

The Right Source For Your Test & Measurement Needs

8715 Mesa Point Terrace San Diego, CA 92154
Toll Free: 1.866.363.6634 Tel: 1.619.429.4545 Fax: 1.619.374.7012
Email: sales@calright.com <http://www.calright.com>



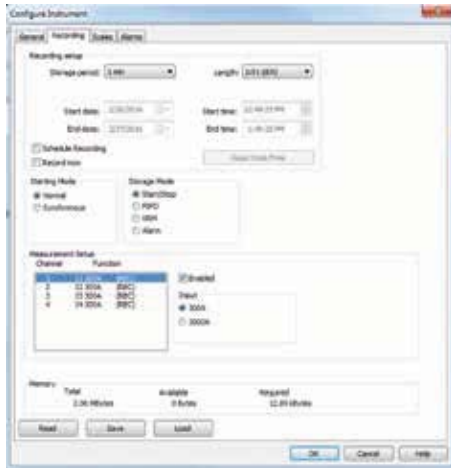
DataView®

Data Analysis and Reporting Software

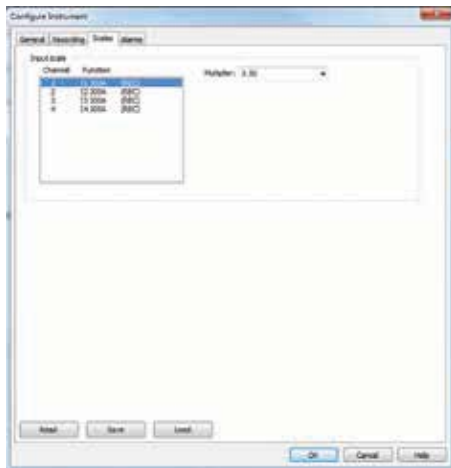
Typical DataView® Functional Displays

Configure all data logger functions

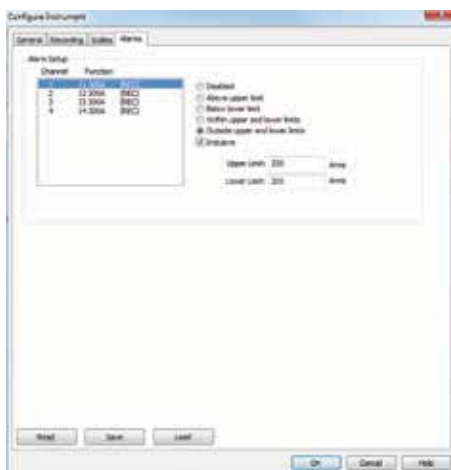
- Display and analyze real-time data on your PC
- Configure all data logger functions and parameters from your PC including sample rate, recording length, channel configuration and more
- Create and store a complete library of configurations that can be uploaded to the logger as needed
- Zoom in and out and pan through sections of the graph to analyze the data
- Download, display and analyze recorded data
- Display waveforms, trend graphs, harmonics (AC models) and text summaries
- Create custom views and reports
- Print reports using standard or custom templates you design
- Free software upgrades are available on our website www.aemc.com



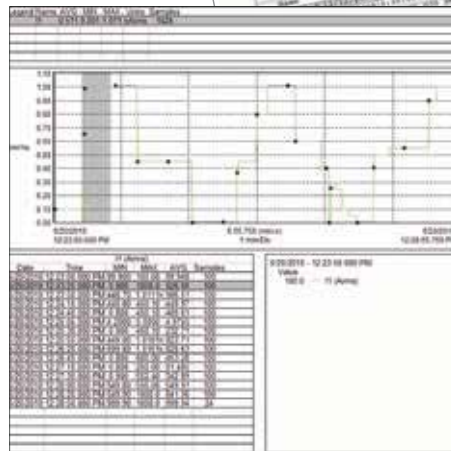
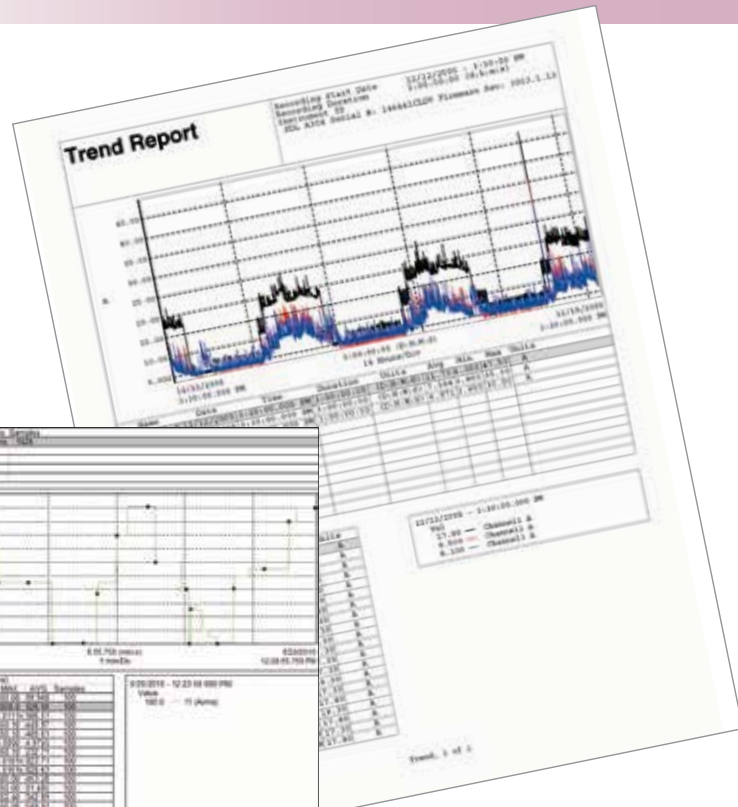
Quick and simple configuration of all functions and settings from one dialog box.



Configure scale functions.



Configure all alarm functions with straightforward selections.



Real-time display of all active inputs on computer through DataView® software.