

Model L642

2 channel specialty logger for recording temperature from thermocouple inputs



► FEATURES

- 2 input channels
- User-selectable thermocouple types J, K, T, N, E, R, and S (not included)
- Programmable storage rates from 1 every 5 seconds to 1 every day
- 4 user selectable storage modes
- Stores up to 240,000 measurements in non-volatile memory
- Powered by standard Alkaline batteries
- 5 LED indicators quickly and clearly display logger status
- Includes FREE DataView® software for data storage, real-time display, analysis and report generation
- Optically isolated USB 2.0 communication cable included
- EN 61010-1; 50V CAT III

► APPLICATIONS

- HVAC monitoring
- Process monitoring
- Refrigeration monitoring
- And many more

► SPECIFICATIONS

MODEL	L642
ELECTRICAL	
Channels	Two
Input Connection	Two miniature, thermocouple connectors
Measurement Range:	°F (°C)
J	-346 to 2192 (-210 to 1200)
K	-328 to 2501 (-200 to 1372)
T	-328 to 752 (-200 to 400)
N	-328 to 2372 (-200 to 1300)
E	-238 to 1742 (-150 to 950)
R	32 to 3212 (0 to 1767)
S	32 to 3212 (0 to 1767)
Resolution	0.1° C/F < 1000° C/F; 1° ≥ 1000° C/F
Accuracy	±(0.1% to 0.2% of Reading + 0.6° to 1°) depending on the range and T/C type
Sample Rate	8 samples taken at storage interval
Storage Rate	Programmable from 5s to 1 per day
Storage Modes	Start/Stop, FIFO, Extended Recording Mode (XRM™) and Alarm
Recording Length	15 minutes to 8 weeks, programmable using DataView®
Memory	240,000 measurements (512KB) The recorded data is stored in non-volatile memory and will be retained even if the battery is low or removed.
Communication	USB 2.0 optically isolated
Power Source	2 x 1.5V AA-cell Alkaline batteries (included)
Battery Life	100 hours to >45 days (dependent on sample rate and recording length)
MECHANICAL	
Dimensions	4.94 x 2.75 x 1.28" (125 x 70 x 32mm)
Weight (with battery)	7 oz (200g)
Case	UL94-V0
Vibration	IEC 68-2-6 (1.5mm, 10 to 55Hz)
Shock	IEC 68-2-27 (30G)
Drop	IEC 68-2-32 (1m)

► PRODUCT INCLUDES

Thermocouple-Flexible

Catalog #2126.47
(1m) K Type, -58° to 480°F



► ACCESSORY

Thermocouple-Needle

Catalog #2126.46 (optional)
(7.25 x 0.5") K Type, -58° to 1292°F



CATALOG NO.	DESCRIPTION
2126.08	Simple Logger® II Model L642 (2-Channel, Temperature Thermocouple, DataView® software)
Accessories (Optional)	
2126.46	Thermocouple-Needle (7.25 x 0.5", K Type, -58° to 1292°F)
2126.47	Thermocouple-Flexible (K Type, -58° to 480°F)



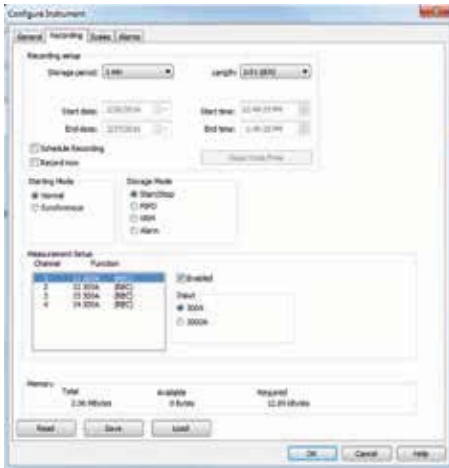
DataView®

Data Analysis and Reporting Software

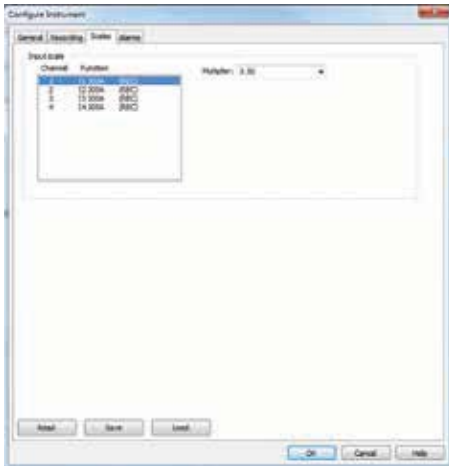
Typical DataView® Functional Displays

Configure all data logger functions

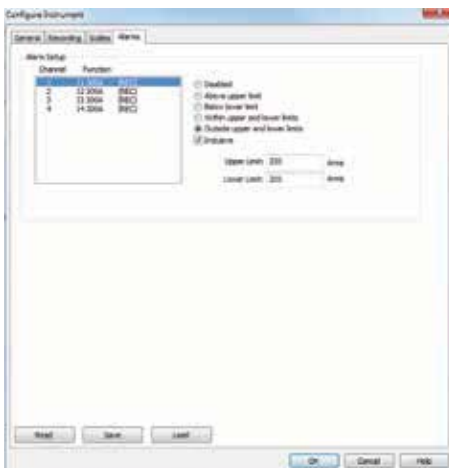
- Display and analyze real-time data on your PC
- Configure all data logger functions and parameters from your PC including sample rate, recording length, channel configuration and more
- Create and store a complete library of configurations that can be uploaded to the logger as needed
- Zoom in and out and pan through sections of the graph to analyze the data
- Download, display and analyze recorded data
- Display waveforms, trend graphs, harmonics (AC models) and text summaries
- Create custom views and reports
- Print reports using standard or custom templates you design
- Free software upgrades are available on our website www.aemc.com



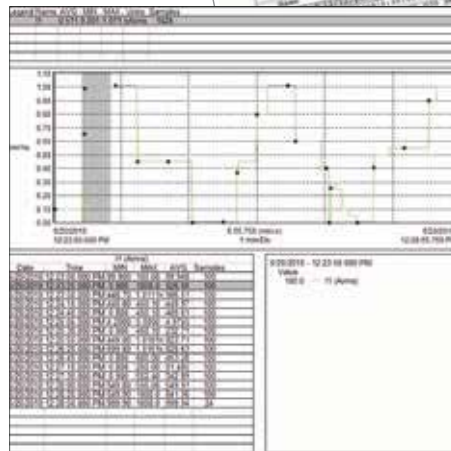
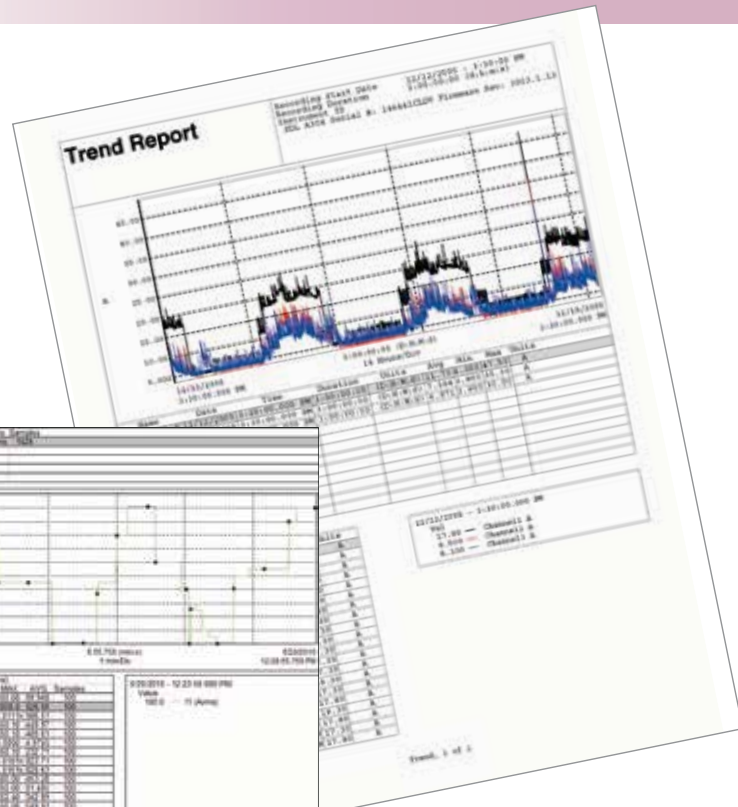
Quick and simple configuration of all functions and settings from one dialog box.



Configure scale functions.



Configure all alarm functions with straightforward selections.



Real-time display of all active inputs on computer through DataView® software.