

Multi-Function Installation Tester Model C.A 6116



NEW!



Features

- Installation testing according to the international standards (IEC 60364-6, NF C 15-100, VDE 100, XP C 16-600, etc.)
- Fast operation and simple access to measurement functions and results
- User-friendly with its large 5.7" backlit graphic screen
- Excellent measurement stability, especially in industrial environments that are affected by disturbances
- Simple, reliable connections
- Onscreen contextual help for each function

SPECIFICATIONS

MODEL	C.A 6116
TECHNICAL	
Insulation	
Rated Voltage	50/100/250/500/1000Vdc
Range/Resolution/Accuracy	0.01 to 2GΩ/1kΩ to 1MΩ/±(5% of measurement + 3cts)
Ground Resistance	
Range/Resolution/Accuracy (3-Point Testing)	0.50 to 4kΩ/0.01Ω to 1Ω/±(2% of measurement + 2cts)
Others	Auxiliary rod resistance measurement (up to 40kΩ)
Installation Voltage/Frequency (with power on)	90 to 550V/15.3 to 17.5Hz - 45 to 65Hz
High-Current Mode with Tripping (1-Point Testing)	
	Test current: 5A
Range/Resolution/Accuracy	0.10Ω to 3,999Ω/0.01 to 1Ω/±(5% of measurement + 2cts)
Mode without Tripping	Test current: 6mA – 9mA – 12mA (by default)
Test Current	6mA – 9mA – 12mA (by default)
Range/Resolution/Accuracy	0.20Ω to 3,999Ω/0.01 to 1Ω/±(5% of measurement + 3cts)
1-Point Selective Ground Testing	
Range/Resolution/Accuracy	0.20Ω to 3,999Ω/0.01 to 1Ω/±(10% of measurement + 10cts)
RCDs/GFCIs	
Installation Voltage/Frequency	90V to 550V/15.3Hz to 17.5Hz/45Hz to 65Hz
IΔn	10/30/100/300/500/650/1000mA or variable - Test in step and pulse modes
No-Trip Test	at ½IΔn – Duration: 1000ms or 2000ms
Tripping Time Measurement	at ½IΔn/2IΔn (selective)/5IΔn
Step Mode	0.3IΔn to 1.06IΔn in steps of 3.3% IΔn
Continuity	
Test Voltage/I Rated	9.5Vdc/I > 200mA up to 39.99Ω and 12mA up to 399.9kΩ with buzzer
Range/Resolution/Accuracy	0Ω to 399.9kΩ/0.01 to 100Ω/±(1.5% of measurement + 2cts)
Loop Impedance (Zi and Zs)	
High-Current Mode with Tripping	Test current: 5A
Range/Resolution/Accuracy	0.1 to 4000Ω/0.01 to 1Ω/±(10% of measurement + 5cts)
NO TRIP Mode (Zs only)	Test current: 6mA – 9mA – 12mA (by default)
Range/Resolution/Accuracy	0.2 to 4000Ω/0.01 to 1Ω/±(10% of measurement + 5cts)
Calculation of Short-Circuit Current	0.1A to 40kA
Other	Measurement of the resistive and inductive components of the impedances Zs and Zi
Current	
	5mA to 19.99A (MN77 clamp)/5mA to 19.99A (C177 clamp)/20mA to 200A (C177A clamp). Current measurement from 1mA available with MN77 & C177 by connecting voltage on the product
Voltage	
	0 to 550Vac/dc
Frequency	
	DC/15.3 to 500Hz
Active Power	
	0 to 110kW single-phase - 0 to 330kW three-phase; Simultaneous display of voltage and current waveforms
Harmonics	
	Voltage and current harmonics/0 to 50 th /THD
Phase Rotation	
	20 to 550Vac
Safety Ratings	
	IEC 61557/IEC 61010, 600V CAT III



Model C.A 6116 includes USB cable, three-pin/line voltage lead, three-pin lead / 3 safety leads, 3 test probes (Ø 4mm), 3 crocodile clips, 2 straight/right angle safety leads (3m), remote-control probe, line voltage power pack, DataView® software, 5 safety connectors wrist strap, 4-point strap for extra comfort, carrying bag and operating manuals (multi-lingual)

MODEL	C.A 6116
GENERAL	
Display	Large 5.7" backlit graphic screen, 320 x 240 counts
Communication	Via USB for data transfer and report creation
Power Supply	Rechargeable battery
Dimensions & Weight	11.02 x 7.48 x 5.04" (280 x 190 x 128mm) 5.29 lbs (2.4kg)

CATALOG NO.	DESCRIPTION
2138.01	Multi-Function Installation Tester Model C.A 6116



The Right Source For Your Test & Measurement Needs

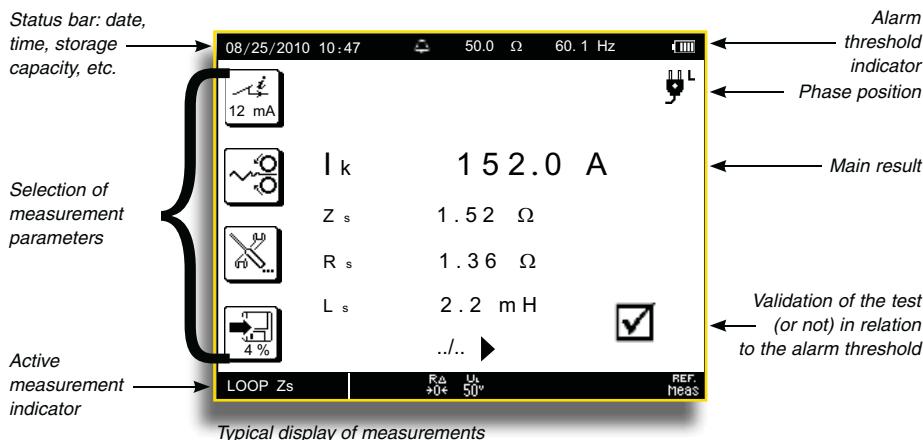
8715 Mesa Point Terrace San Diego, CA 92154
Toll Free: 1.866.363.6634 Tel: 1.619.429.4545 Fax: 1.619.374.7012
Email: sales@calright.com <http://www.calright.com>

DataView®

Data Analysis and Reporting Software

Model C.A 6116 Display

The display allows you to view all the essential results at a glance



Measurement Performance

- Continuity
- Insulation
- Grounding resistance
- 3 ft. grounding resistance
- Grounding resistance measurement with system energized (Ra)
- Selective grounding resistance measurement with system energized (Ra Sel.)
- Line impedance (Zi)
- Loop impedance (Zs)
- Ground fault device test
- Power & harmonics

Configure all installation testing functions of the Model C.A 6116

The measurements made with the Model C.A 6116 can also be processed with the DataView® multi-product expert processing software.

DataView® automatically recognizes the instrument when it is connected to the PC and opens the corresponding menu.

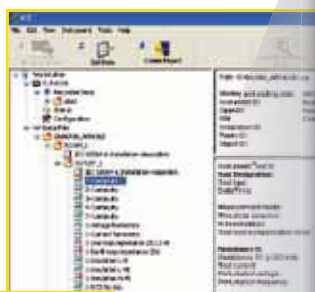
The menu, in tree form, offers users direct access to the data recorded in the instrument, its configuration, etc.

DataView® includes a large number of report templates for quick printing in full compliance with the applicable standards.

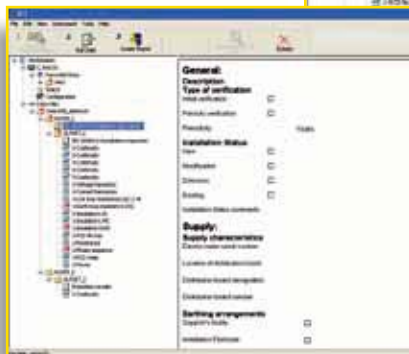
Users can also create their own templates, as required.



DataView® software



Instrument Test Id:	1-Continuity	
Test Designation:	Continuity	
Test type:	Continuity	
Date/Time:	08/25/2010 10:50:50	
Measurement mode:	+200 mA	
Threshold selection:	Instrument ID:	
R threshold (ε):	2.00	Ω
Test lead compensation value:	0.02	Ω
Resistance R:	1.19 Ω	
Resistance R1 (+200 mA):	1.19	Ω
Test current:	206.3	mA
Perturbation voltage:	0.0	V
Perturbation frequency:	---	Hz
Test result:	Pass	
Comments:		



Production of a report according to the IEC 60364-6 standard

On the left-hand side of the screen, the menu presents the tree structure of the data present in the product and measurement campaigns, clearly identified (customer, location, type of measurements, etc.).

The part displayed as a zoom corresponds to the test carried out. It indicates the result of the main measurement. Whatever the test, the result (in this case, Pass) is displayed clearly.