

# AQ INCUBA



The Latest in Incubator Monitoring & Real-Time Data-Logging  
for Air Quality Analysis for Incubators

Built with Quality in Mind

## CO<sub>2</sub> Incubator Monitor

**Accurate**

**Temp.**

CO<sub>2</sub> Measurement Ranges of:  
(0 - 5%, 0 - 10%, 0 - 20%)

**Reliable**

**CO<sub>2</sub>**

Relative Humidity & Temperature

**Fast**

**%RH**

REAL-TIME Data-Logging

Active Internal Sampling Pump

User Friendly Interface

Large Internal Memory (2000)

Long Lasting Rechargeable Battery

Protective Magnetic Hands-Free Boot

MADE IN USA



**NEW**



Bluetooth®

### Accessories:

Real-Time PC Software

Optional Wireless Printer

Optional Temperature Probe

Wireless Communications with  
Computer & Remote Printer

Real-Time Data-Logging for Graphs,  
Data Review, & IAQ Reports

Light Weight, Durable,  
Hand-Held Design



**CALRIGHT  
INSTRUMENTS**

The Right Source For Your Test & Measurement Needs

8715 Mesa Point Terrace San Diego, CA 92154  
Toll Free: 1.866.363.6634 Tel: 1.619.429.4545 Fax: 1.619.374.7012  
Email: sales@calright.com <http://www.calright.com>

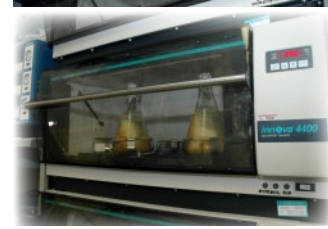
# AQ INCUBA



## Specifications

Parameter	Sensor	Range	Res.	Accuracy
CO <sub>2</sub>	NDIR	0 - 5%	0.1%	± 3% of rdg.
		0 - 10%	0.1%	± 3% of rdg.
		0 - 20%	0.1%	± 3% of rdg.
Relative Humidity	TFC	5 - 95% RH	0.1% RH	± 2% RH
Ambient Temperature	Pt100	-40 - 257°F (-40 - 125°C)	0.1°C/F	± 0.4°C (0 - 60°C)
Barometric Pressure	Solid State	260 - 1260 mbar	1 mbar	± 2 mbar
Temperature Type K T1	Tc K	0 - 2000°F (0 - 1100°C)	1°C/F	5°F (3°C) or 2% of rdg
O <sub>2</sub>	Electrochemical	0 - 25%	0.1%	± 0.1% vol rdg.
Electromagnetic Compatibility		EN 61326-1, Portable Equipment		

## Applications



## Features

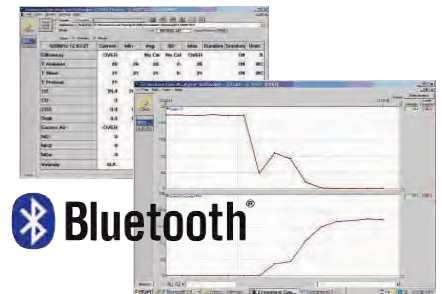
### ALL AQ INCUBA Kits Include:

- CO<sub>2</sub> Measurement
- Barometric Pressure
- Moisture Removal System
- Continuous Active Internal Sampling Pump
- Sampling Hose & Filter
- Differential Temperature
- Operating Manual
- Long Lasting Battery & AC Charger
- Factory Calibration Certificate

CO<sub>2</sub>      Temp  
% RH  
O<sub>2</sub>  
P. Bar

## AQ INCUBA ORDERING CODE

AQ INCUBA Kit	100	101	102
CO <sub>2</sub>	0 - 5%	0 - 10%	0 - 20%
% Relative Humidity	✓	✓	✓
Ambient Temp	✓	✓	✓
Barometric Pressure	✓	✓	✓
O <sub>2</sub> (0 - 25%)	Option	Option	Option



AQ Gas® Real-time Datalogging Software

## Optional Accessories



Wireless Bluetooth™ Printer (EE900P)



Pack of 3 Moisture Filters (AQ650078)



Moisture Exchange Tube (AQMET)



Temp. & RH Extension Probe (TRH-EXT)



Temperature Probe (E1500SP)



The Right Source For Your Test & Measurement Needs

8715 Mesa Point Terrace San Diego, CA 92154  
Toll Free: 1.866.363.6634 Tel: 1.619.429.4545 Fax: 1.619.374.7012  
Email: sales@calright.com <http://www.calright.com>