

# AQ PRO NEW!



## Handheld Indoor Air Quality Monitor

The Latest in Indoor Air Quality Monitoring & Real-Time Data-Logging for IAQ Analysis in Hospitals, Universities, Labs, Airports, and more

- Customize UP to 3 Gases (Multiple Parameters - Up to 6 Total)
- REAL-TIME Continuous Data-Logging
- Active Internal Sampling Pump
- Compact Handheld Unit
- PC Software & USB Included
- Large Internal Memory (2000)
- Long Lasting Rechargeable Battery
- Barometric Air Pressure
- Protective Magnetic Rubber Boot
- Optional Wireless Printer
- Optional Handheld Probe
- MADE IN USA 



% RH

Temp

Barometric Pressure

CO<sub>2</sub>

CO

Formaldehyde

NO<sub>2</sub>

SO<sub>2</sub>

H<sub>2</sub>S

O<sub>2</sub>

NO

 Bluetooth®

“Built with Quality in Mind”



 Real-Time Data-Logging for Graphs, Data Review, IAQ reports

 Wireless Communications with Computer & Remote Printer

 Light Weight, Durable, Handheld Design

 **CALRIGHT INSTRUMENTS**

The Right Source For Your Test & Measurement Needs

8715 Mesa Point Terrace San Diego, CA 92154  
Toll Free: 1.866.363.6634 Tel: 1.619.429.4545 Fax: 1.619.374.7012  
Email: sales@calright.com <http://www.calright.com>

# AQ PRO



## Specifications

Parameter	Sensor	Range	Res.	Accuracy
Relative Humidity	TFC	5 - 95% RH	0.1% RH	± 2% RH
Ambient Temp.	Pt100	-40 - 257°F (-40 - 125°C)	0.1°C/F	± 0.4°C (0 - 60°C)
Barometric Pressure	Solid State	260 - 1260 mbar	1 mbar	± 2 mbar
Differential Pressure	Bridge	± 8.0 inH <sub>2</sub> O (±20.0 mbar)	0.1 inH <sub>2</sub> O (0.25 mbar)	± 1% of rdg.
Temperature Type K T1	Tc K	0 - 2000°F (0 - 1100°C)	1°C/F	± 2% of rdg.
Air Velocity	Calculated	0 - 300 ft/sec	1 ft/sec	
Electromagnetic Compatibility	EN 61326-1, Portable Equipment			

## AQ PRO ORDERING CODE

Part #: PRO - \_\_\_ - \_\_\_ - \_\_\_

Example: Part #: PRO - C2 - C - H = CO<sub>2</sub>, CO, & H<sub>2</sub>S

### ALL AQ PRO Kits Include:

- Temperature, % Relative Humidity
- Barometric Pressure
- PC Software & USB Cable
- REAL-TIME** Continuous Data-Logging
- Bluetooth Connectivity
- Protective Carrying Case
- Continuous Active Internal Sampling Pump
- Differential Pressure
- Operating Manual & Quick Reference Guide
- Long Lasting Battery & AC Charger
- Factory Calibration Certificate

### Select UP to ANY 3\* Gases Below:

Parameter	Sensor	Range	Res.	Accuracy
<b>C2</b> - Carbon Dioxide (CO <sub>2</sub> ) <sup>1</sup>	NDIR	0 - 5,000 ppm	1 ppm	± 2% of rdg. ± 10 ppm
<b>C</b> - Carbon Monoxide (CO) <sup>1</sup>	EC <sup>2,5</sup>	0 - 200 ppm	0.1 ppm	± 4% of rdg. ± 0.5 ppm
<b>F</b> - Formaldehyde (CH <sub>2</sub> O) <sup>3,4</sup>	EC <sup>2,5</sup>	0 - 10 ppm (0 - 10,000 ppb)	1 ppb	± 5% of rdg. ± 50 ppb
<b>H</b> - Hydrogen Sulfide (H <sub>2</sub> S) <sup>1</sup>	EC <sup>2,5</sup>	0 - 100 ppm	1 ppm	± 4% of rdg. ± 0.5 ppm
<b>N</b> - Nitrogen Dioxide (NO <sub>2</sub> ) <sup>1</sup>	EC <sup>2,5</sup>	0 - 20 ppm	0.1 ppm	± 4% of rdg. ± 0.5 ppm
<b>O</b> - Oxygen (O <sub>2</sub> )	EC <sup>2,5</sup>	0 - 25%	0.1 %	± 0.1% vol rdg.
<b>S</b> - Sulfur Dioxide (SO <sub>2</sub> ) <sup>1</sup>	EC <sup>2,5</sup>	0 - 20 ppm	0.1 ppm	± 4% of rdg. ± 0.5 ppm
<b>X</b> - Nitric Oxide (NO) <sup>1</sup>	EC <sup>2,5</sup>	0 - 250 ppm	0.1 ppm	± 4% of rdg. ± 0.5 ppm

1. Other Ranges are Available Upon Request

2. Electrochemical

3. Accuracy Based on Laboratory Conditions

4. This sensor may have interference from H<sub>2</sub>, CO, H<sub>2</sub>S and other reducing gases such as alcohols

**\*5. Maximum of TWO (2) Electrochemical (EC) Sensors Per Unit**

## Optional Accessories



Wireless Bluetooth™  
Printer  
(EE900P)



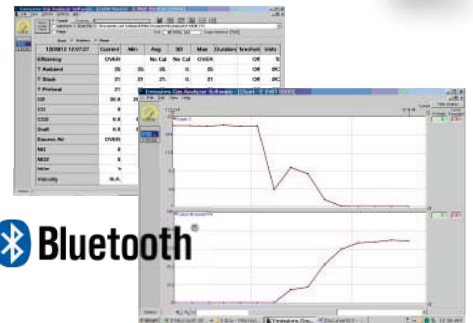
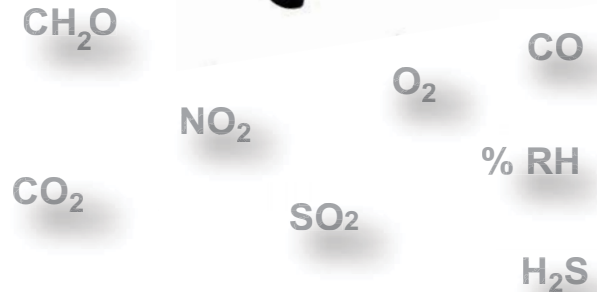
Sampling Probe  
(E85AACSF13)



Moisture Exchange  
Tube for Calibration  
(AQMET)



Pitot Tube  
for Air Velocity  
(BB610032)



AQ Gas® Real-Time  
Datalogging Software

Distributed By:



The Right Source For Your Test & Measurement Needs

8715 Mesa Point Terrace San Diego, CA 92154  
Toll Free: 1.866.363.6634 Tel: 1.619.429.4545 Fax: 1.619.374.7012  
Email: sales@calright.com <http://www.calright.com>

