


Portable Indoor Air Quality Monitor

Providing the latest in Monitoring & Data Logging for IAQ testing in Buildings, Hospitals, Universities, Labs, Clean Rooms, Airports & more

- Customize UP to 7 Gases
(Multiple Parameters - Up to 12)
- REAL-TIME Continuous Data-Logging
- Long Lasting Rechargeable Battery
- Large Internal Memory (2000)
- PC Software & USB Included
- Easy to Use Menu System
- Optional Wireless Printer
- Portable w/ Swivel Handle
- Barometric Air Pressure
- Dual Temp TcK Inputs
- Optional Air Sampling Probe
- Active Internal Sampling Pump
- MADE IN USA 



% RH

Temp

Barometric
Pressure

CO₂

CO

VOC

Formaldehyde

NO₂

NO

O₃

O₂

H₂S

SO₂

“Built with Quality in Mind”



Real-Time Data-Logging Software
For Graphs, Data Review, IAQ Reports

Wireless Communications with
Computer & Remote Printer

Light Weight, Durable, and
Easy to Transport Design

AQ EXPERT



Applications



CO₂, CO, % RH, Temp, TVOC's, O₂, NO, NO₂, O₃, CH₂O, SO₂, H₂S, Barometric Pressure

Features

Custom to Your Application

Up to 7 different toxic gases to meet the needs of most air quality analyses

REAL-TIME Data Logging

Save and graph using USB or wireless Bluetooth to a Computer or Tablet

VOCs

CO₂



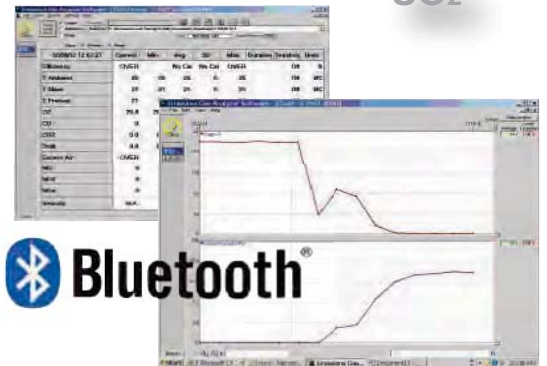
NO₂

VOCs

NO

CH₂O

SO₂



AQ Gas[®] Real-Time Datalogging Software

Easy Calibration

Built-in menu driven calibration procedure

Made in USA

Designed and manufactured in the USA



O₂

% RH

H₂S

CO



The Right Source For Your Test & Measurement Needs

8715 Mesa Point Terrace San Diego, CA 92154
 Toll Free: 1.866.363.6634 Tel: 1.619.429.4545 Fax: 1.619.374.7012
 Email: sales@calright.com <http://www.calright.com>

Specifications

Parameter	Sensor	Range	Res.	Accuracy
CO ₂	NDIR	0 - 5,000 ppm	1 ppm	±2% of rdg. ±10 ppm
CO ₂	NDIR	0 - 20%	0.1%	±3% of rdg.
CO ¹	Electrochemical	0 - 200 ppm	0.1 ppm	±4% of rdg. ±0.5 ppm
% RH	Thin Film Capacitive	5 - 95% RH	0.1% RH	±2% RH
Ambient Temperature	Pt100	-40 - 257°F (-40 - 125°C)	0.1°C/F	±2°F (32-140°F) (± 0.4°C [0-60°C])
VOCs	PID	0 - 20,000 ppb (0 - 46,000 µg/m ³)	1 ppb (1 µg/m ³)	±10 % of rdg. ± 20 ppb
VOCs	PID	0 - 200 ppm (0 - 460 mg/m ³)	1 ppm (1 mg/m ³)	±10 % of rdg. ± 2 ppm
O ₂	Electrochemical	0 - 25%	0.1%	±0.1% vol rdg.
Ozone (O ₃)	Electrochemical	0 - 5 ppm	1 ppb	
H ₂ S ¹	Electrochemical	0 - 100 ppm	1 ppm	±4% of rdg. ± 0.5 ppm
CH ₂ O ^{2,3}	Electrochemical	0 - 10,000 ppb	1 ppb	±5% of rdg. ± 50 ppb
NO ¹	Electrochemical	0 - 250 ppm	0.1 ppm	±4% of rdg. ±0.5 ppm
NO ₂ ¹	Electrochemical	0 - 20 ppm	0.1 ppm	±4% of rdg. ±0.5 ppm
SO ₂ ¹	Electrochemical	0 - 20 ppm	0.1 ppm	±4% of rdg. ±0.5 ppm
Barometric Pressure	Solid State	260 - 1260 mbar	1 mbar	±2 mbar
Differential Pressure	Bridge	±40.0 inH ₂ O (±100 mbar)	0.1 inH ₂ O (0.25 mbar)	±1% of rdg.
Temperature Type K T1 & T2	Tc K	0 - 2000°F (0 - 1100°C)	1°C/F	±2% of rdg.
Air Velocity	Calculated	0 - 300 ft/sec	1 ft/sec	
Electromagnetic compatibility		EN 61326-1, Portable Equipment		

1. Other Ranges are Available Upon Request 2. Accuracy Based on Laboratory Conditions 3. This sensor may have interference from H₂, CO, H₂S and other reducing gases such as alcohols

Accessories



Wireless Bluetooth Printer



Sampling Probe



Air Velocity w/ Pitot Tube



Carrying Case



Moisture Exchange Tube for Calibration



Ambient Air Zero Filter

AQ EXPERT ORDERING CODE

Part Number: EXPERT-____-____-____-____-____
 (Example: EXPERT-C2-C-V1 = Ambient Temp, % RH, Barometric Pressure, CO₂ (0-5000 ppm), CO (0-200 ppm), VOC (0-20,000 ppb))

AQ EXPERT Base Unit Including:

- Ambient Temperature, % Relative Humidity
- Barometric Pressure, Wet Bulb & Dew Point
- Continuous Internal Sampling Pump
- REAL-TIME data logging
- PC Software (with USB Cable)
- Wireless Bluetooth & External Dongle
- Dual-channel TcK (Diff. Temp)
- Differential Pressure
- Differential Temperature
- Operating Manual
- Swivel Handle for Easy Transport
- Rechargeable Battery & AC Charger
- Factory Calibration Certificate



ADD UP TO 7 (SEVEN) ADDITIONAL SENSORS FROM THE LIST BELOW:

PART NUMBER	DESCRIPTION
Expert-	AQ Expert Base Unit w/ Ambient Temp, %RH, Barometric Pressure
*-C2	CO ₂ Sensor (0-5,000 ppm)
*-C	CO Sensor (0-200 ppm)
-V1	VOC Sensor (0-20,000 ppb)
-V2	VOC Sensor (0-200 ppm)
*-N	NO ₂ Sensor (0-20 ppm)**
-Z	O ₃ Sensor (0-5 ppm)**
*-H	H ₂ S Sensor (0-100 ppm)
-O	O ₂ Sensor (0-25%)
*-S	SO ₂ Sensor (0-20 ppm)**
*-X	NO Sensor (0-250 ppm)
-F	CH ₂ O Sensor (0-10,000 ppb)

* Other Ranges are Available Upon Request

** Note: All 3 O₃, NO₂, & SO₂ Sensors Cannot Concurrently be Installed on one Instrument

OPTIONAL ACCESSORIES:

PART NUMBER	DESCRIPTION
E858140	Protective Carrying Case
AQ CAL-ZF	Ambient Air Zero Filter
AQ MET	Moisture Exchange Tube for Calibration
E85AACSF13	12" (300mm) Probe, 10' (3m) Dual Hose
EE900P	Bluetooth Wireless Printer
BB610032	12" (300mm) Pitot Tube (Air Velocity)
AACKP01	Differential Pressure Kit

